



# SPS-5 v8 Programming Guide

Refer to the SPS-5 v8 “Quick Start Guide” for other Information.

*“We Deliver Information at the Speed of Light”*

## Getting Started

Insert the “Product Support CD” into a Laptop or Desktop.  
On the Main Screen of the CD find and install the Encoder Setup v8 Program Software.  
Attach the paging system using the supplied standard RS-232 serial cable to **Com Port 1**.  
The **SPS-5 v8** will be **Auto-Detected** by the Encoder Setup Software when you **Open** the Com Port.

## Encoder Software Main Screen

Start the **SPS-5 v8** Encoder Setup Program and Click on the “**Com Port**” Button in the Menu and Click on “**Properties**”.  
See Fig. 1

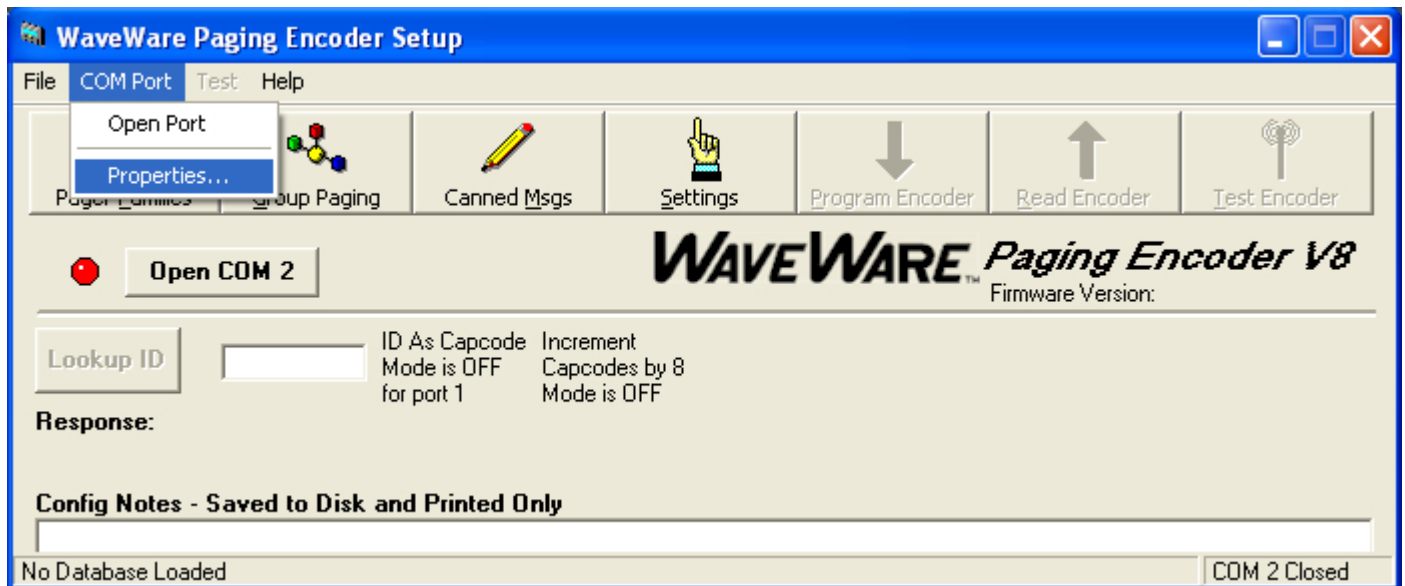


Fig. 1 (Choose the Com Port, Part 1)

## Com Port Settings Screen

Choose the “**Com Port**” and Settings and Click “**OK**”.  
See Fig. 2

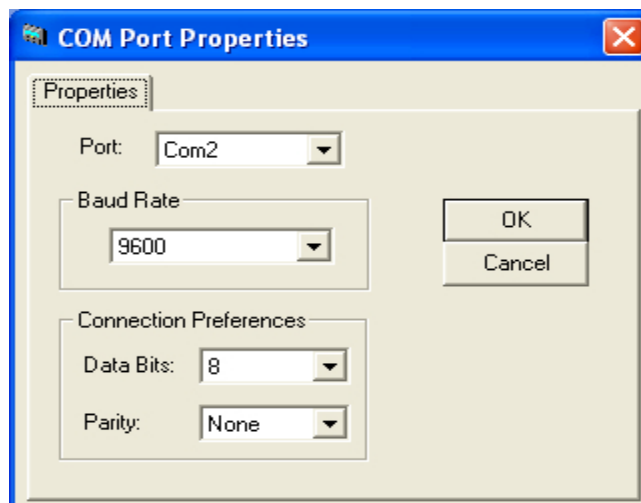


Fig. 2 (Choose the Com Port, Part 2)

## Encoder Software Main Screen

On the Main Screen of Encoder Setup Program, Click on the “Open Com (X)” Button next to the **RED** Light.  
See Fig. 3

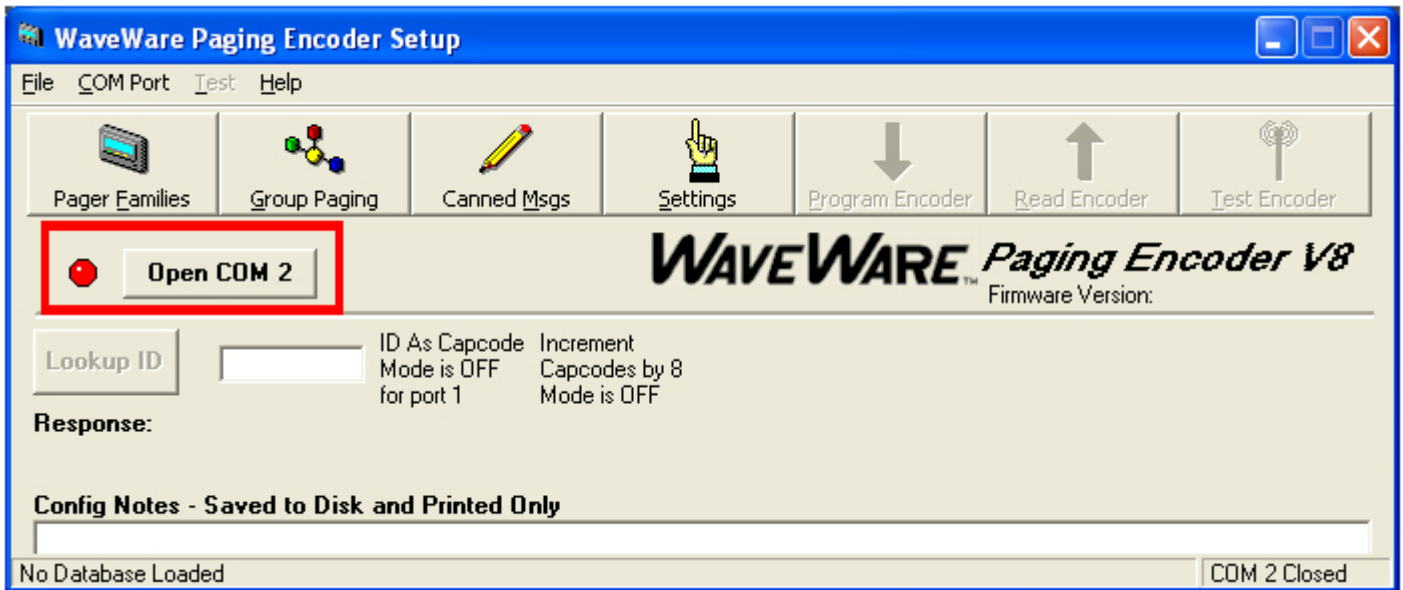


Fig. 3 (Open the Com Port, Part 1)

The Software will detect the SPS-5 v8 Paging System and Open the Com Port and the Light will turn **Green**.  
See Fig. 4

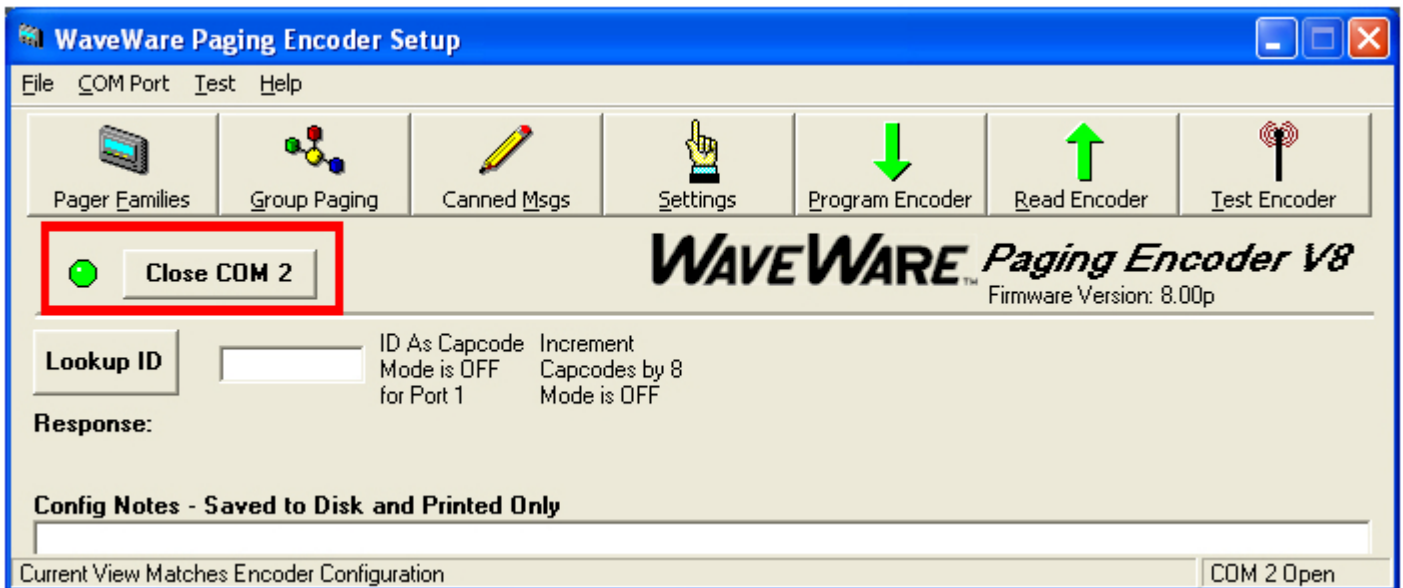


Fig. 4 (Open the Com Port, Part 2)

The Software has detected the SPS-5 v8 Paging System, Opened the Port and will now READ the Database.  
Click “OK”  
See Fig. 5

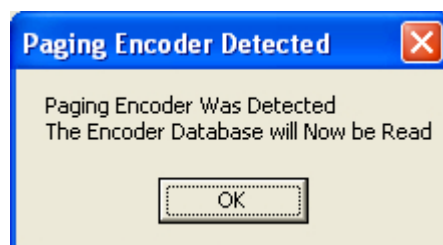
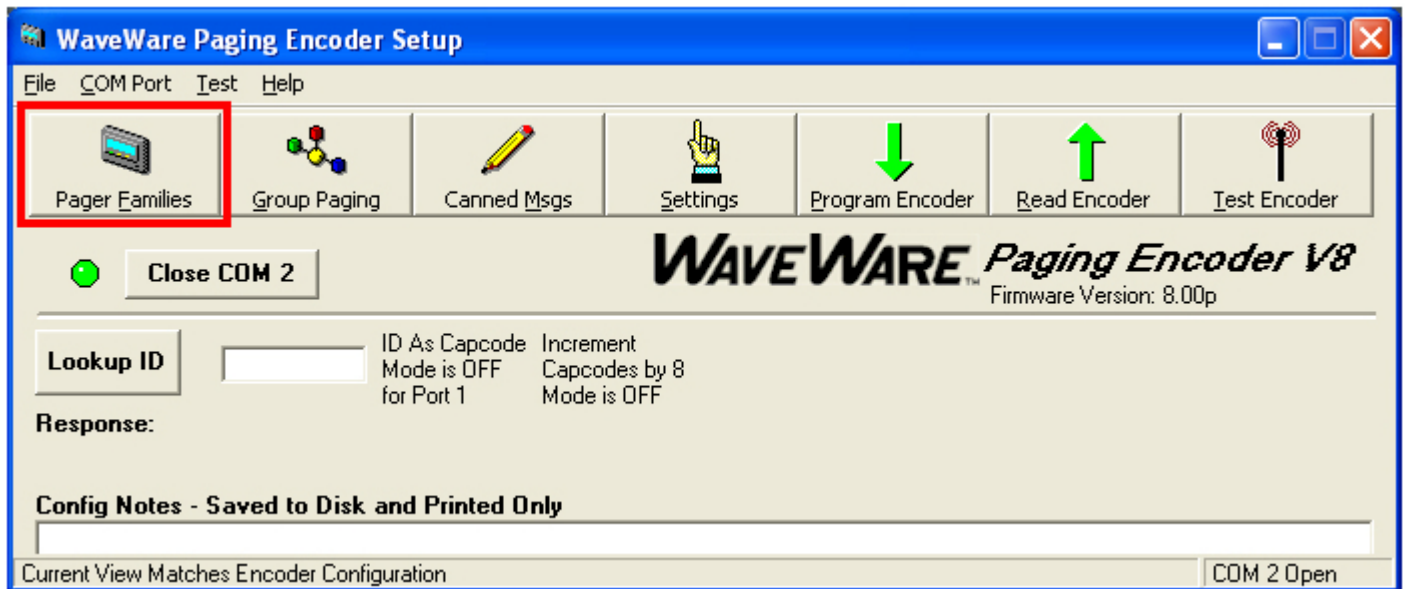


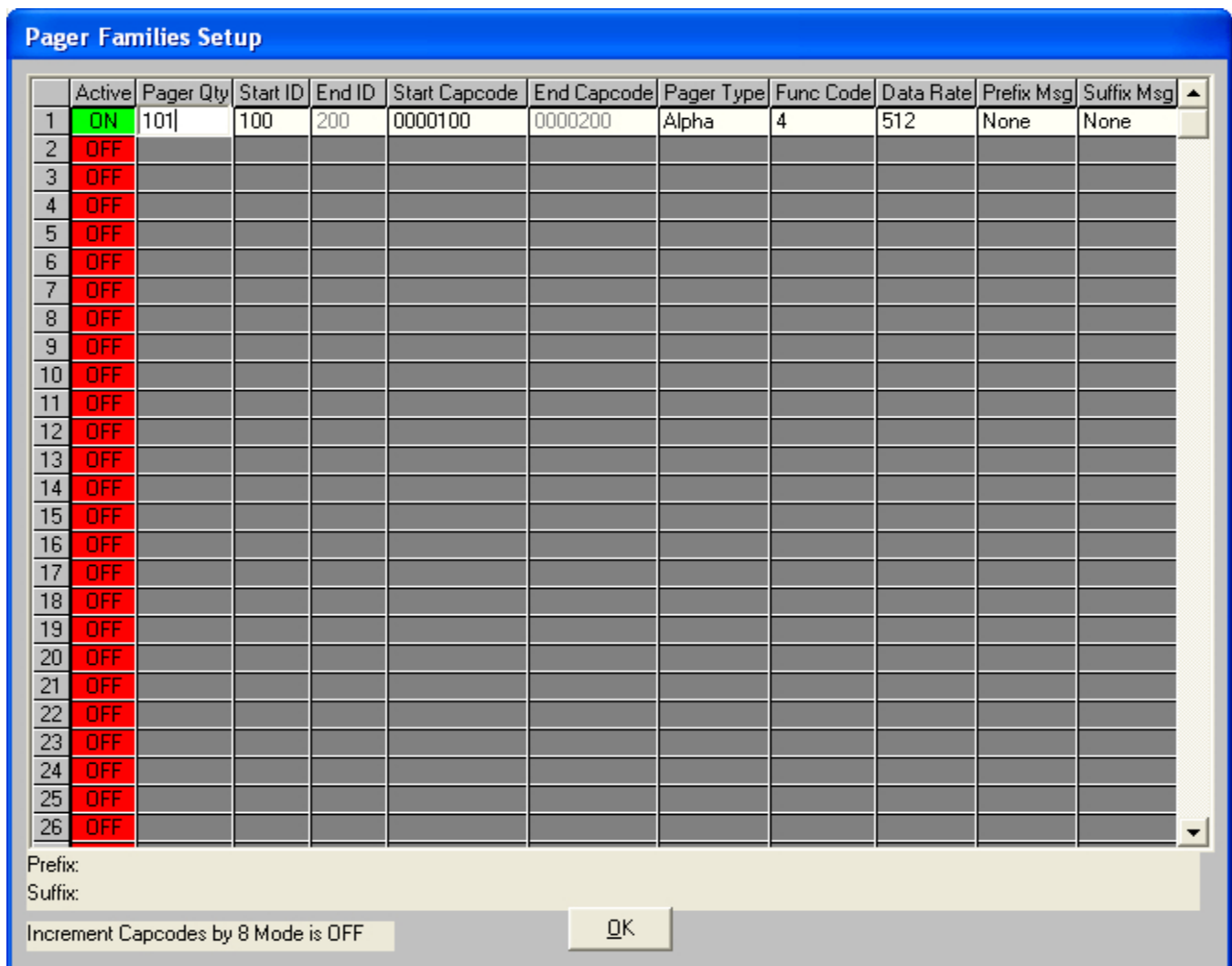
Fig. 5 (You **MUST** read the Database)

On the Main Screen of Encoder Setup Program, Click on the **“Pager Families”** Icon to Open the Pager Database.  
See Fig. 6



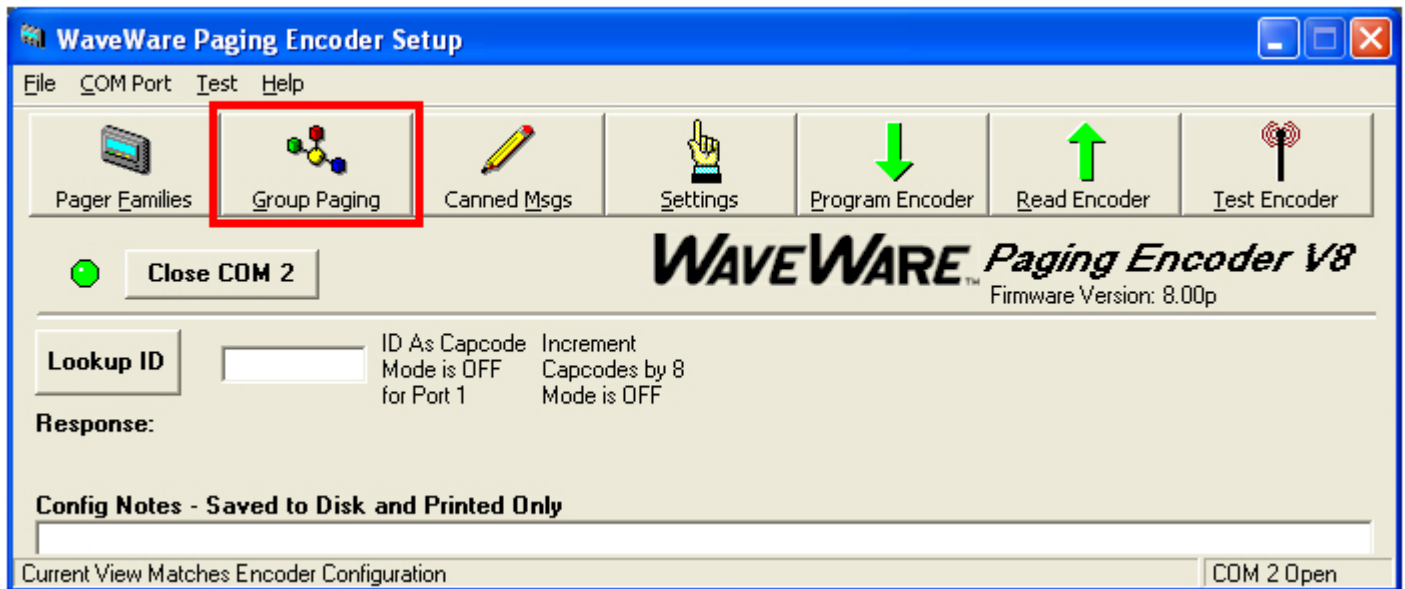
**Fig. 6 (Open the Pager Database)**

Pager Families Screen: Enter Quantity, Pager ID's, 7-Digit Cap Code, Baud Rate, Pager Type and Function code.  
Function Code 4 is normally for Alphanumeric Pagers and Function Code 1 is normally for Numeric Pagers.  
When Finished, Click **“OK”** See Fig. 7



**Fig. 7 (Enter Pagers in the Database) If Family 1 is Red, Click to Activate and to Add Pagers, it will turn Green.**

On the Main Screen of Encoder Setup Program, Click on “**Group Paging**” to Open the Pager Database.  
See Fig. 8



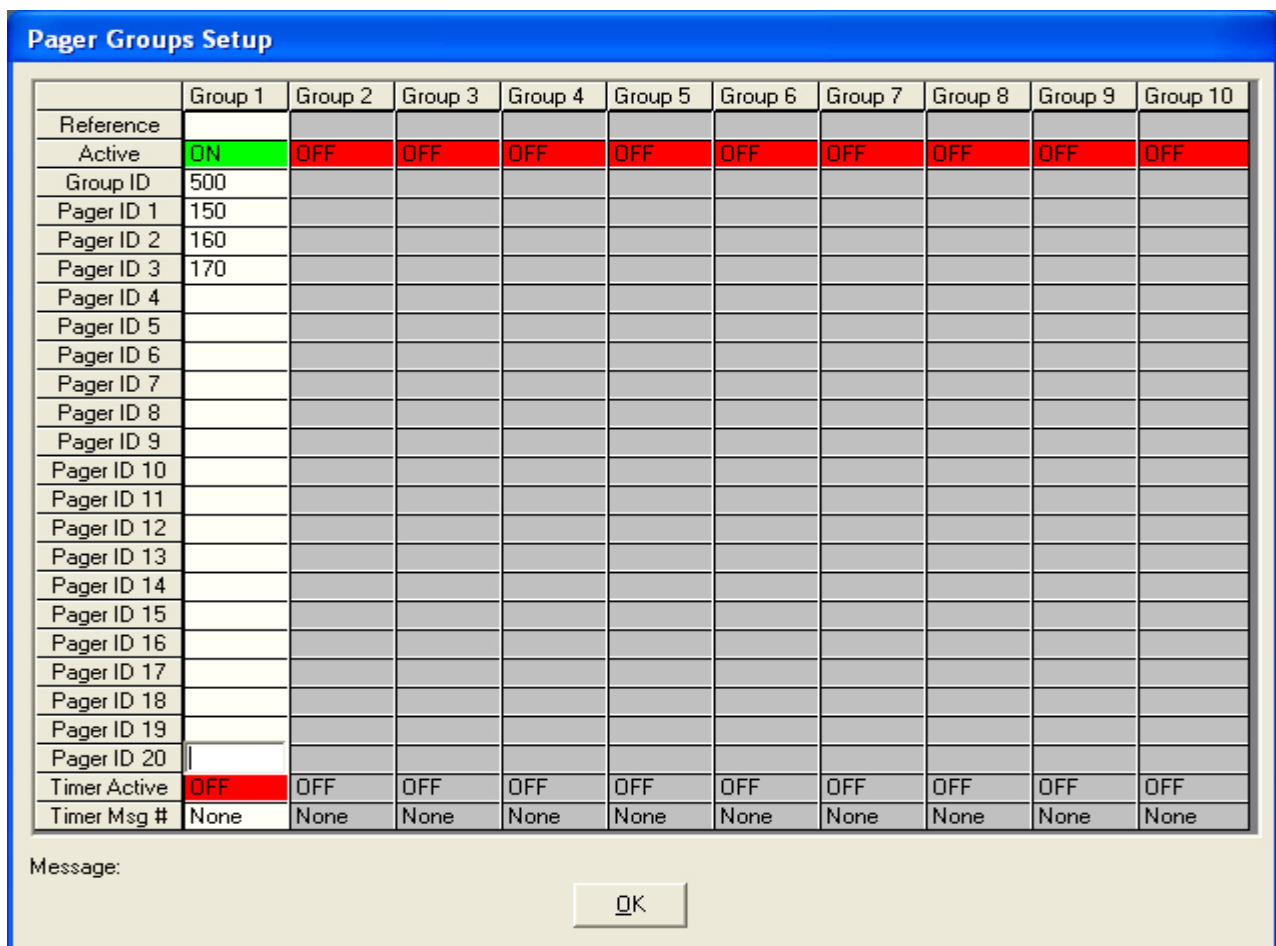
**Fig. 8 (Group Paging)**

**Pager Groups Screen:** Enter The Group ID and list the pager ID’s you want in that group. The ID’s must be in the Pager Families, programmed previously. **Note:** In most cases you would use a “**Common**” Pager Cap Code in the Pager themselves instead of using Pager Groups. Using a Common Cap code will page all pagers at the same time; whereas using a group will page each pager one at a time, which is slow.

Pager Groups would be used primarily when “**Timer Active**” Mode is needed.

When finished, Click “**OK**”

See Fig. 9



**Fig. 9 (Pager Groups Setup)** If Group 1 is RED, click on the Box to Activate that Group, it will turn Green.

Pager Groups "Timer" Screen: This will send a page every 2 minutes to the pagers listed in that Group unless the "Host system issues a "Reset" Command. You create the message to be sent in the "Canned Messages" Screen. When Finished, Click "OK". See Fig. 10

	Group 1	Group 2	Group 3	Group 4	Group 5	Group 6	Group 7	Group 8	Group 9	Group 10
Reference										
Active	ON	OFF	OFF	OFF	OFF	OFF	OFF	OFF	OFF	OFF
Group ID	500									
Pager ID 1	150									
Pager ID 2	160									
Pager ID 3	170									
Pager ID 4										
Pager ID 5										
Pager ID 6										
Pager ID 7										
Pager ID 8										
Pager ID 9										
Pager ID 10										
Pager ID 11										
Pager ID 12										
Pager ID 13										
Pager ID 14										
Pager ID 15										
Pager ID 16										
Pager ID 17										
Pager ID 18										
Pager ID 19										
Pager ID 20										
Timer Active	ON	OFF	OFF	OFF	OFF	OFF	OFF	OFF	OFF	OFF
Timer Msg #	1	None	None	None	None	None	None	None	None	None

Message: Back Door Alarm

OK

Fig. 10 (Activate Timer) If Timer in the group is RED, click on the Box to Activate and it will turn Green.

"Timer Message": Choose the Number of the Canned Message you want to send.

**Programming the Canned (Predefined) Messages (See next page).**

On the Main Screen of Encoder Setup Program, Click on the “**Canned Messages**” Icon to Open the Predefined Messages Screen.  
See Fig. 11

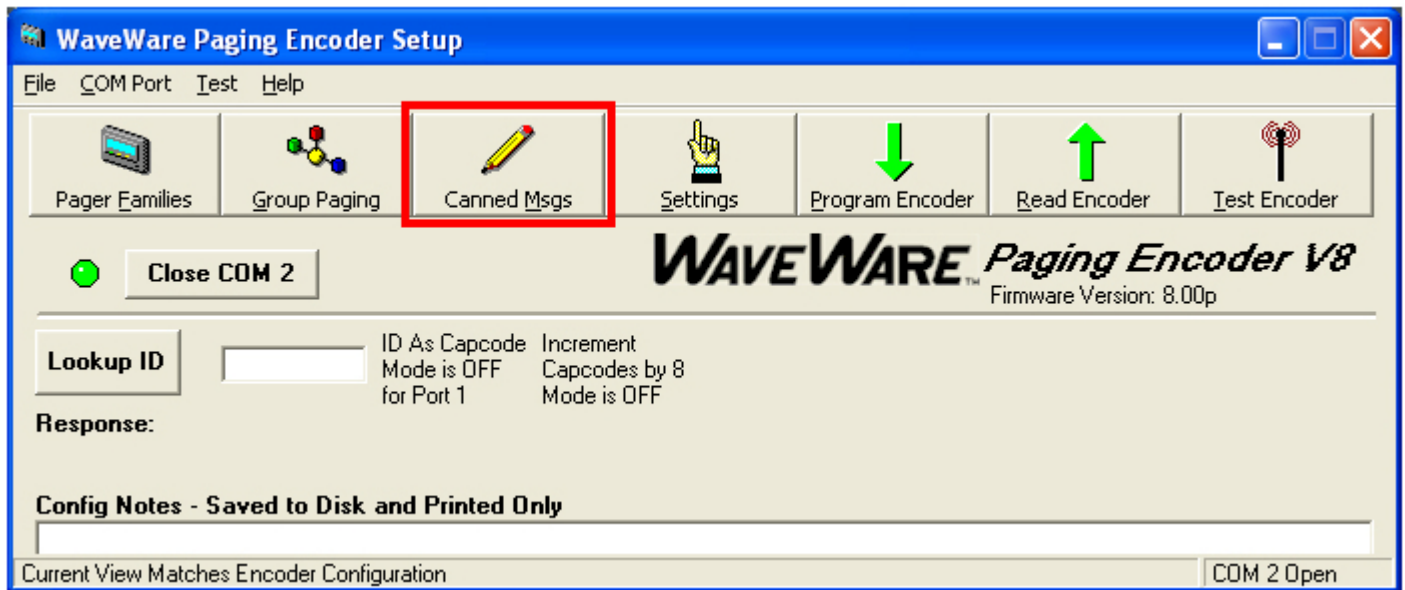


Fig. 11 (Canned Messages)

In the “**Predefined Messages Setup**” Screen type the Message you want sent, 1 Message per Line and Click “**OK**”.  
See Fig. 12

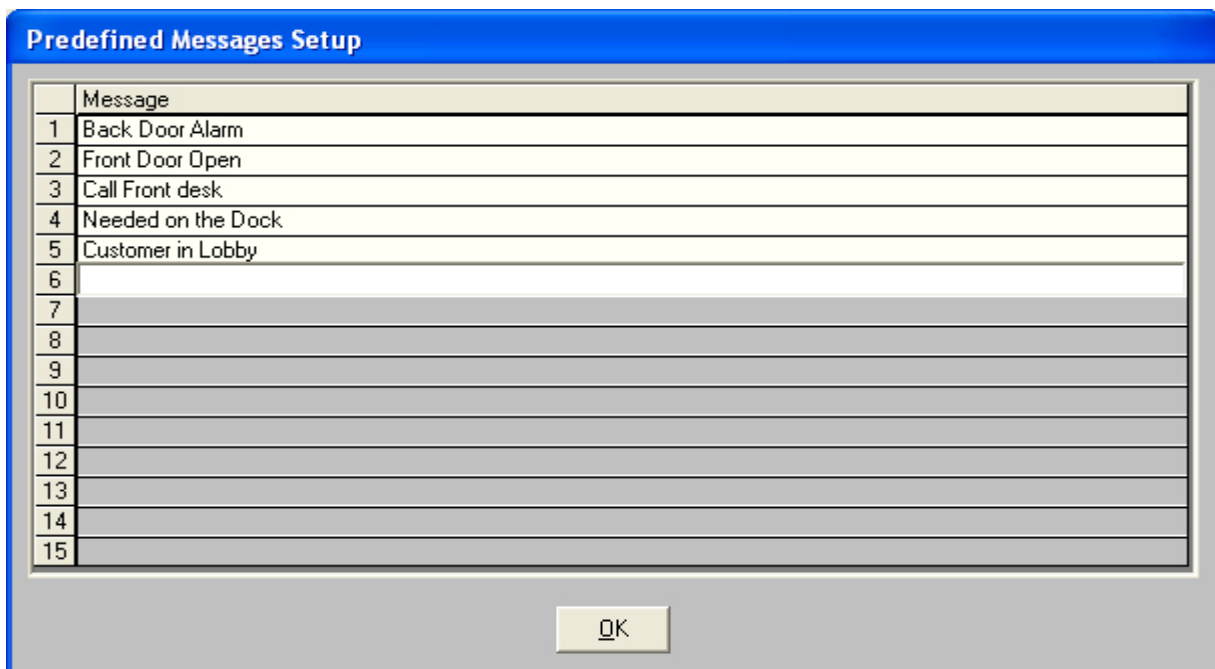
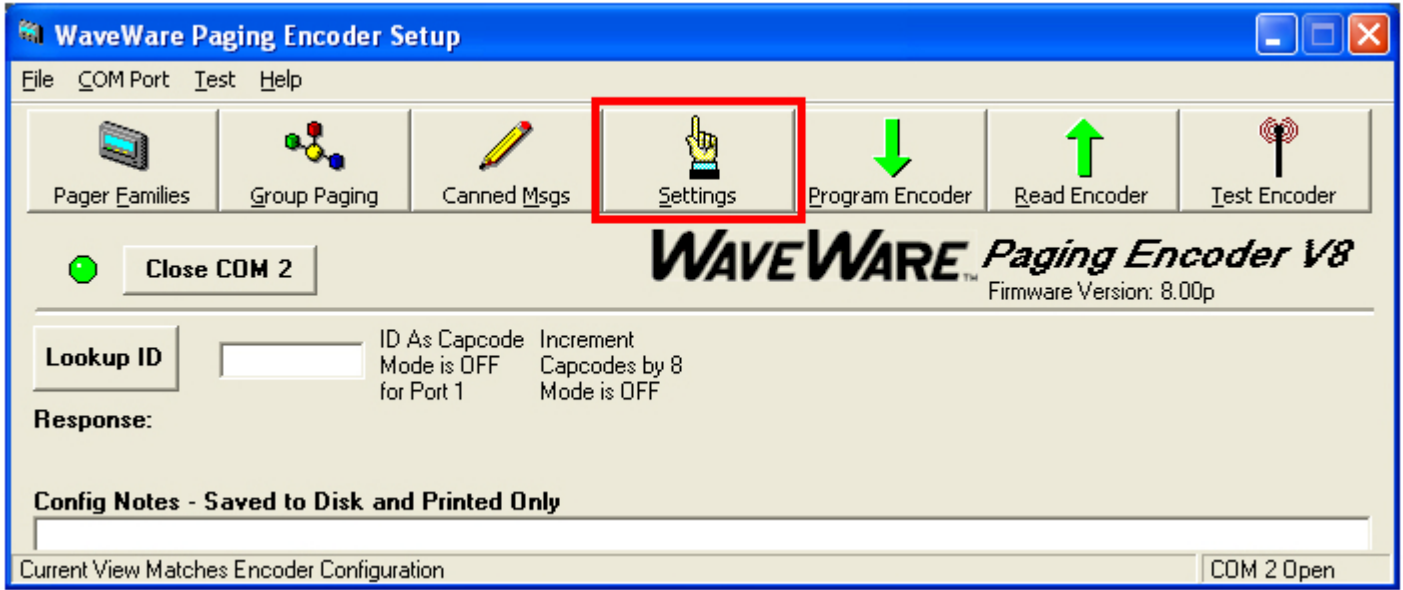


Fig. 12 (Add Predefined Messages)

On the Main Screen of Encoder Setup Program, Click on the “**Settings**” Icon to Open the Predefined Messages Screen.  
See Fig. 13



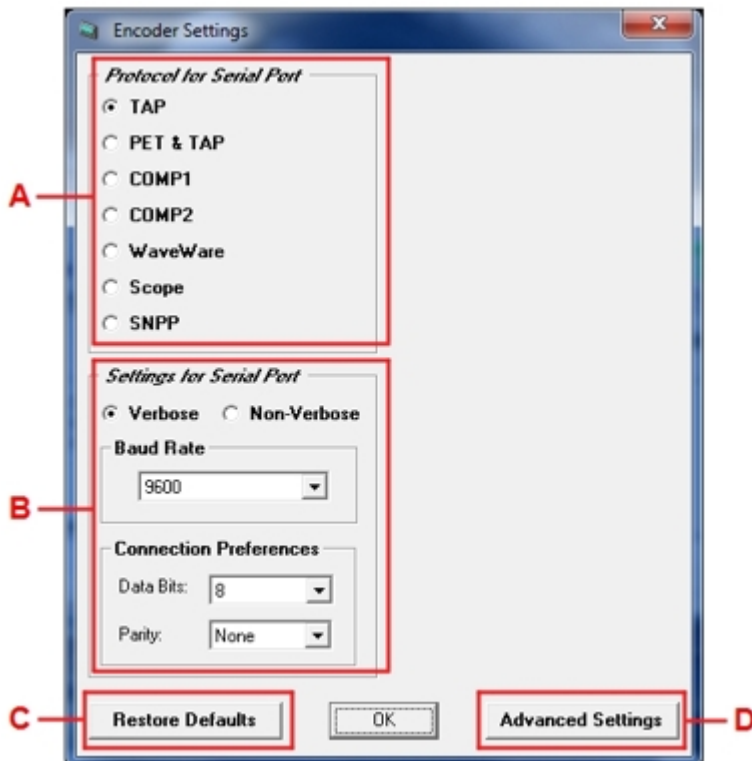
**Fig. 13 (Settings Icon)**

The **SPS-5 v8** Encoder has a New “Dual Com Port” Feature as an Option ([Must be Requested at Time of Purchase](#)).  
The Dual Com Port is an “Add-On” Option and will add to the cost of the system.  
The “Advanced Settings” Button will give you more Options.  
The “Program Radio” Button is Non-Functional at this time.

Below are the “**Encoder Settings**” screen for the Com Ports and Protocols.

**NOTE:** Defaults are shown below. Fig. 14

When Finished, Click “**OK**”.



**Fig. 14 (Factory Defaults Shown)**

**Encoder Settings:**

**A: Protocol for the Com Port**

Choices are TAP, PET and TAP, COMP1, COMP2, WaveWare and Scope.

**B: Settings for the Com Port**

Choices are Verbose or Non-Verbose and Baud Rates of 300, 1200, 2400 and 9600 with Connection Settings of N 8, E 7 or O 7.

**C: Restore Defaults Button**

Click on this Button to “Restore” Settings to Factory Defaults.

**D: Advanced Encoder Settings Button**

Click on this Button to open the “Advanced Encoder Settings Screen for more Options. See next page.

The “Advance Settings” Screen is next:

To enter the “Advanced Encoder Settings” Screen you must type in the User ID “Maint” (Not Case Sensitive). Click “OK”. See Fig. 15

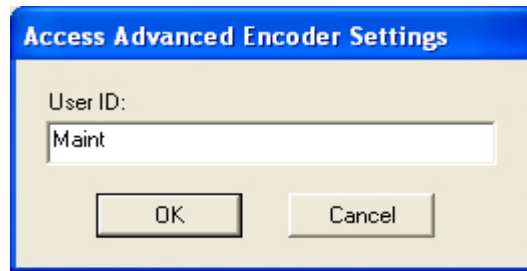


Fig. 15 (Enter Password “Maint”)

Below is the Advanced Encoder Settings Screen.

In MOST cases you will NOT have to adjust these settings.

The “Restore Defaults” Button will set each field back to the original default settings and affects the Entire screen.

When finished, Click “OK”.

See Fig. 16

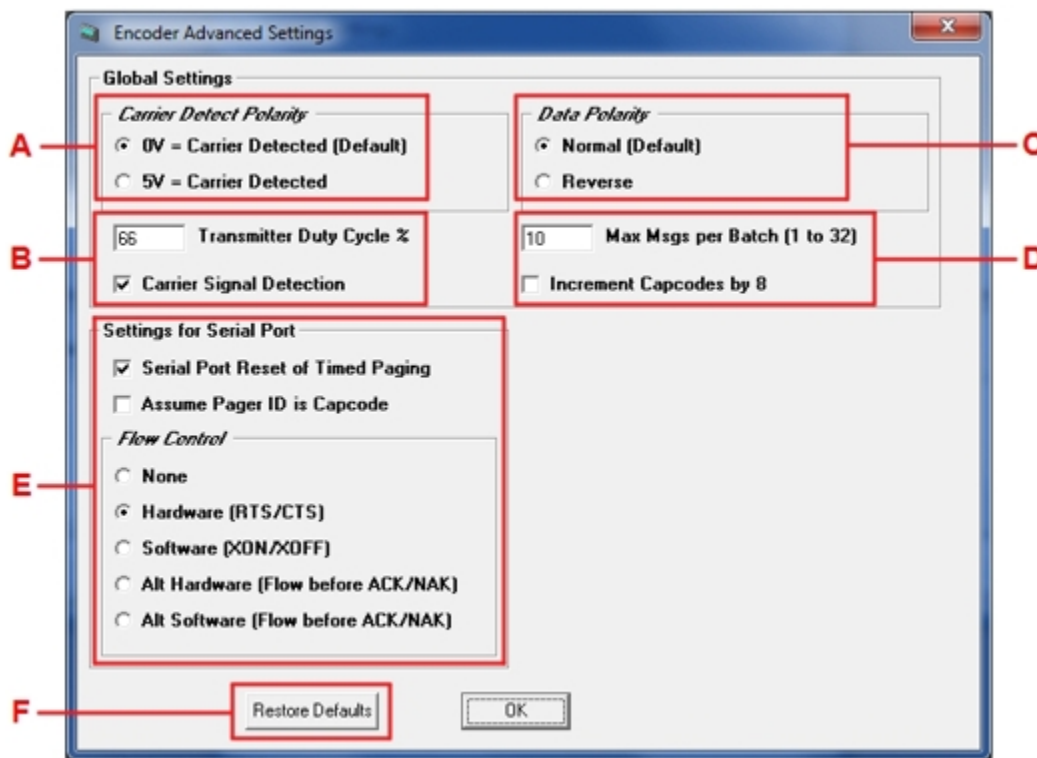


Fig. 16 (Default Settings)

Advance Encoder Settings – “Default Settings”: (As Shown) Fig. 16

- A: Carrier Detect = 0v
- B: Transmitter Duty Cycle = 66% and Carrier Signal Detection is “ON”
- C: Data Encoding Polarity = Normal
- D: Max Messages per Batch = 10 and Increment Cap Codes by 8 is “OFF” (Not Checked)
- E: Settings for Com Port = Serial Port RESET of Timed Paging (Checked) and Flow Control- Setting = Hardware (RTS/CTS)
- F: Restore Defaults- This Button will set the Entire Screen to Original Factory Default Settings.



## Programming, Reading and Saving the Pager Database and Settings

On the Main Screen of Encoder Setup Program, Click on the “**Program Encoder**” Icon to program the Encoder.  
Programs the SPS-5 v8’s Pager Database and all Settings.  
See Fig. 17

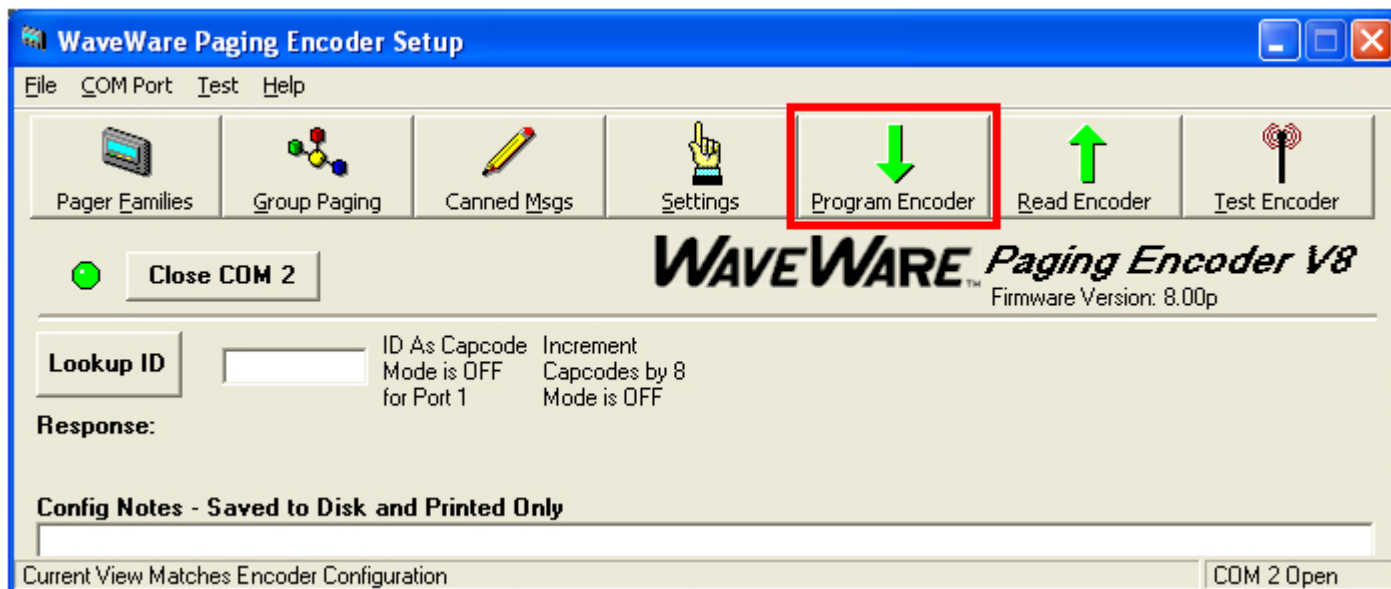


Fig. 17 (Programs the SPS-5 v8’sEncoder)

On the Main Screen of Encoder Setup Program, Click on the “**Read Encoder**” Icon to see the Database information.  
Used when you want to check to be sure everything you have programmed into the database was saved and is correct.  
See Fig. 18

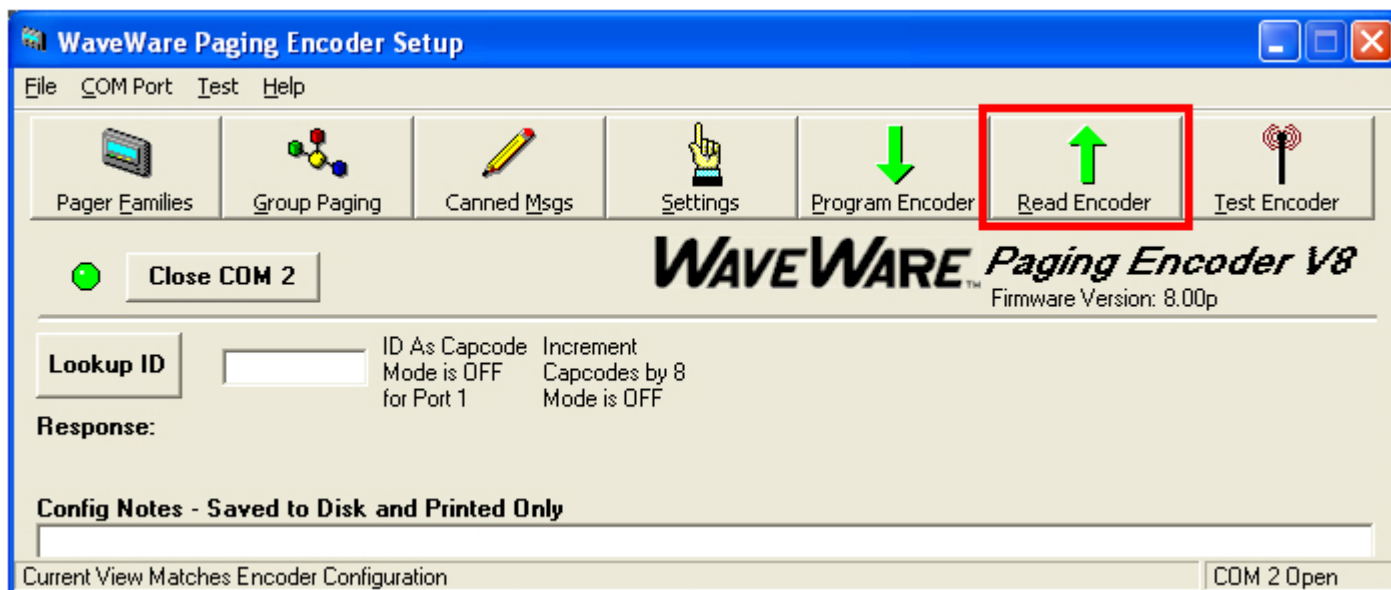
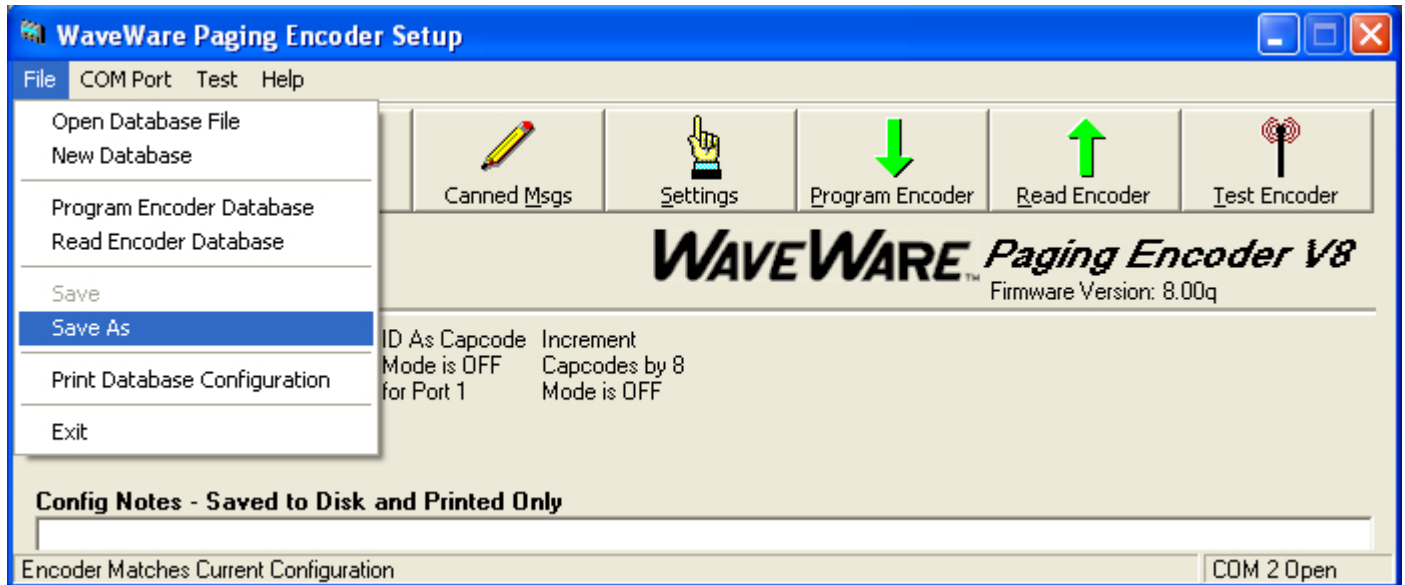


Fig. 18 (Reads the SPS-5 v8’s Pager Database and all Settings)

Saving the Database and Settings, see next page.

It is recommended that you save the Database **“Before and After”** you have finished Programming the **SPS-5 v8**.  
See Fig. 19



**Fig. 19 (Click on “Files” and then Click “Save As” and name your file)**

After **“Reading”** the Database for the first time (before you make any changes to the database), save the information. This would give you a “Base Program” to fall back on in case you ever need the “Original” database and settings. After making your changes and you have programmed the new information into the Database, save your completed work as a different name, (maybe for that particular job location).

**Test the Encoder, Next Page.**

## Test the Encoder with Pagers

On the Main Screen of Encoder Setup Program, Click on the “Test Encoder” Icon to send a test message.  
See Fig. 20

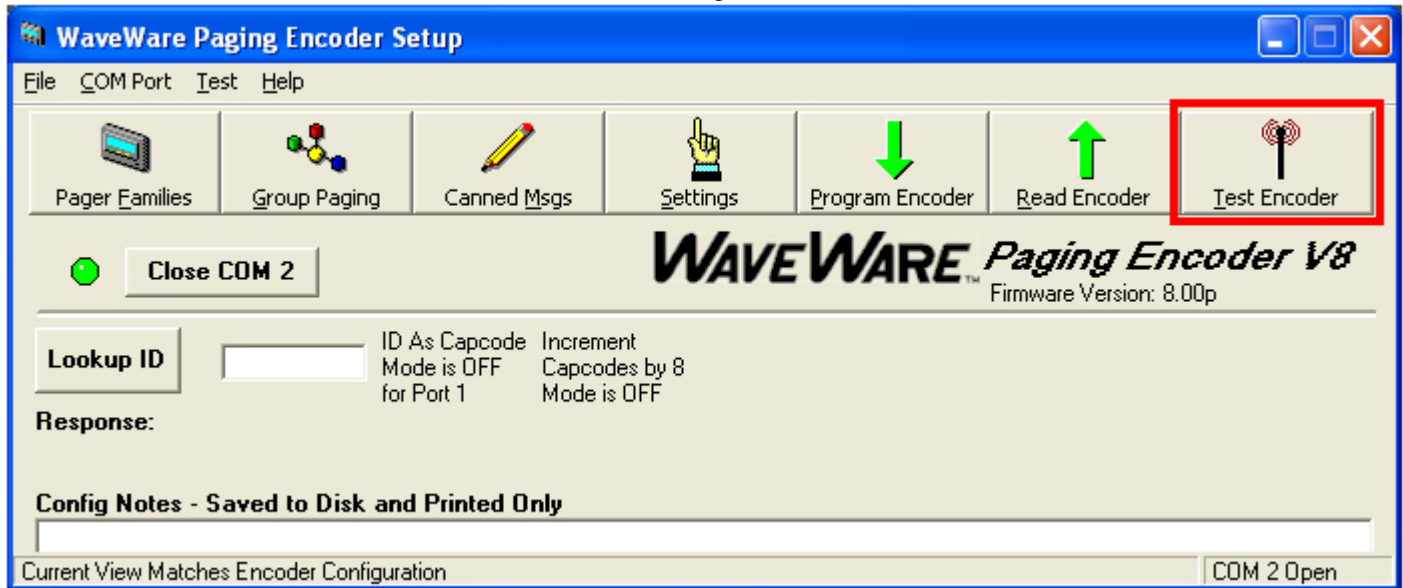


Fig. 20 (Open the Test Encoder Screen)

### Test Encoder Screen

In this screen you can Test your Pagers, Create and Archive Messages, View Com Port Logging, save the Logs to a File.  
See Fig. 21

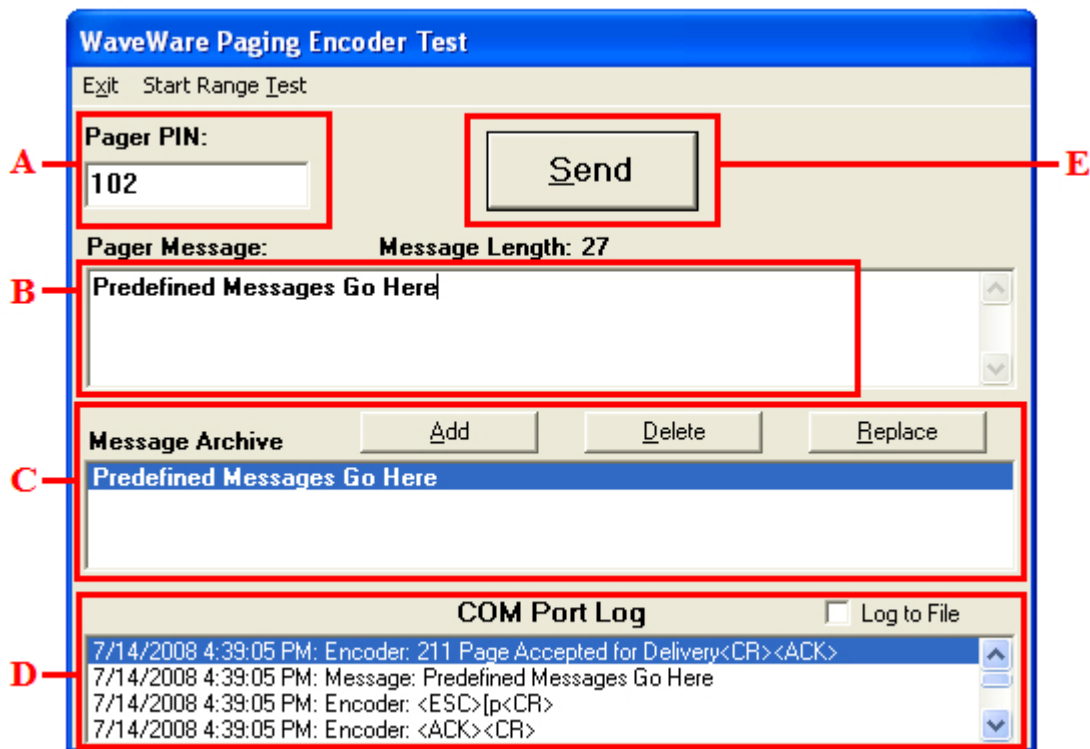


Fig. 21 (Test Encoder Screen)

- A: Pager Pin** = Enter the Pager “ID” of the pager you want to test. It MUST match the Pager ID in the Database.
- B: Pager Message** = Type the Message you want to send to the Pager.
- C: Message Archive** = When you type a Message (B) you have the choice to save it by Highlighting the Message and click on the “ADD” Button. The Message will show in the Archive Window (C) and you may click on it anytime to move it to the Pager Message Window to send that message to a pager. You can “Replace” any message with a different message or “Delete” a Message from the Archive List.
- D: Com Port Log** = Shows a Log of All Activity with the Option of saving the Logs to a file.
- E: Send Button** = Click on this Button to send the message to a pager.

## Range Test Function

This Function is to help test the “Coverage Area” of the transmitter.  
To use the “Range Test”, you must first enter in a “Pager ID” (A) and the “Pager ID” must be valid in the Database.  
After you enter the “Pager ID”, then you can click “Start Range Test”.  
See Fig. 22

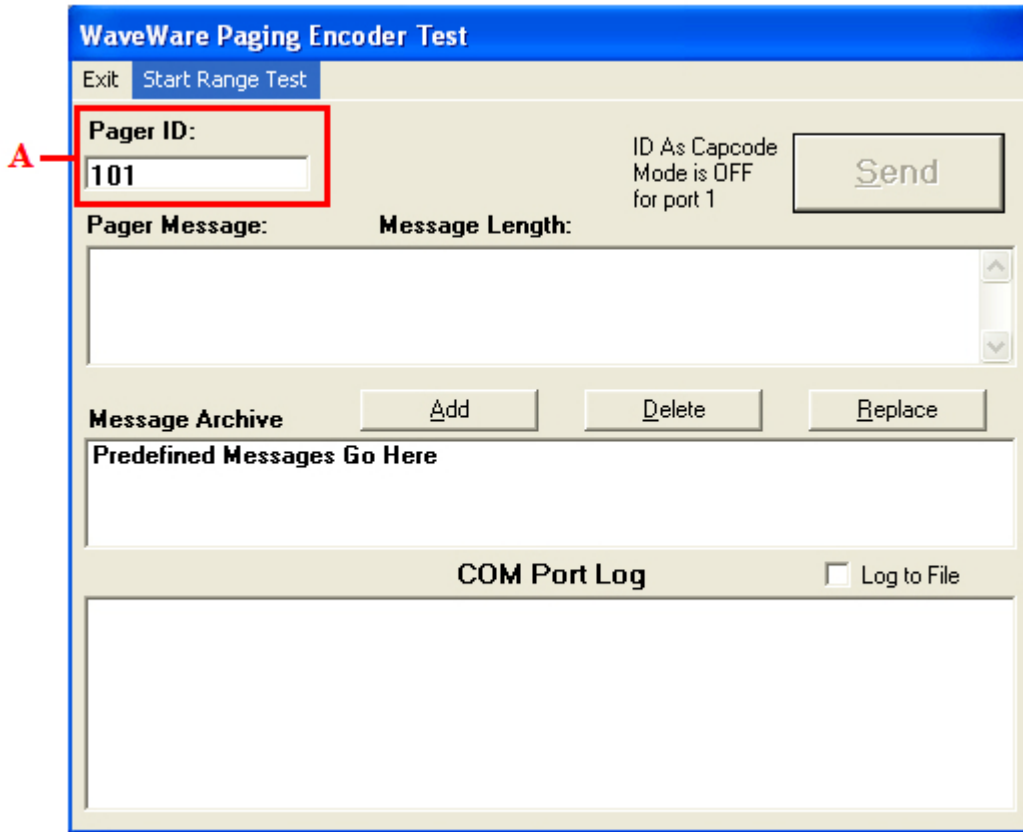


Fig. 22 (Range Test Function)

## Range Test Setup

In this screen you can use the Default “Test” message or type any message in the “Base Message” Field (A).  
See Fig. 23

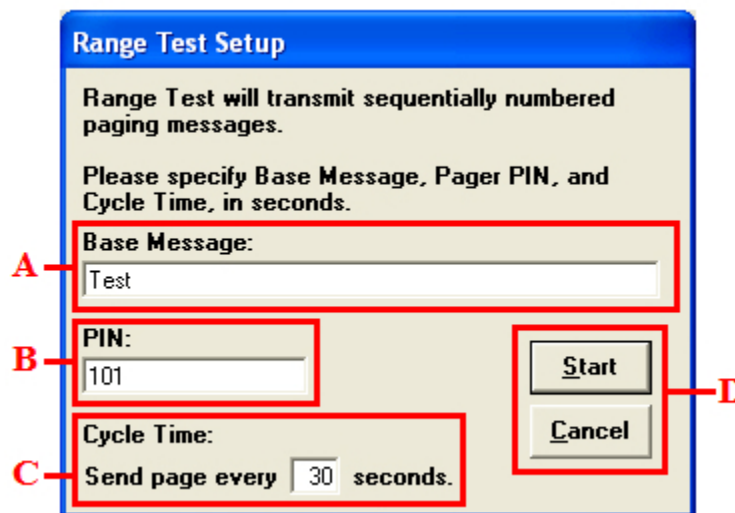


Fig. 23 (Range Test Setup)

- A: Base Message** = Use Default Message “Test” or any Custom message you want.
- B: Pin** = Use the **Pager ID** you entered in previous screen or type another Pager ID you want to use.
- C: Cycle Time** = Default is **30 seconds** but you may enter a different cycle time.
- D: Start / Cancel** = When ready click “Start” to begin test. When finished click “Cancel” to end the Range Test.

## Lookup ID Function

The “**Lookup ID**” Function (A) will help you determine whether a Pager ID number you want to use is Valid or not. If it is valid, the “**Response:**” will show the Pager Information (B) and if the ID is NOT in the Pager Families Database, it will be Invalid and the “**Response:**” will show “**Pager ID is Invalid**”.

See Fig. 24

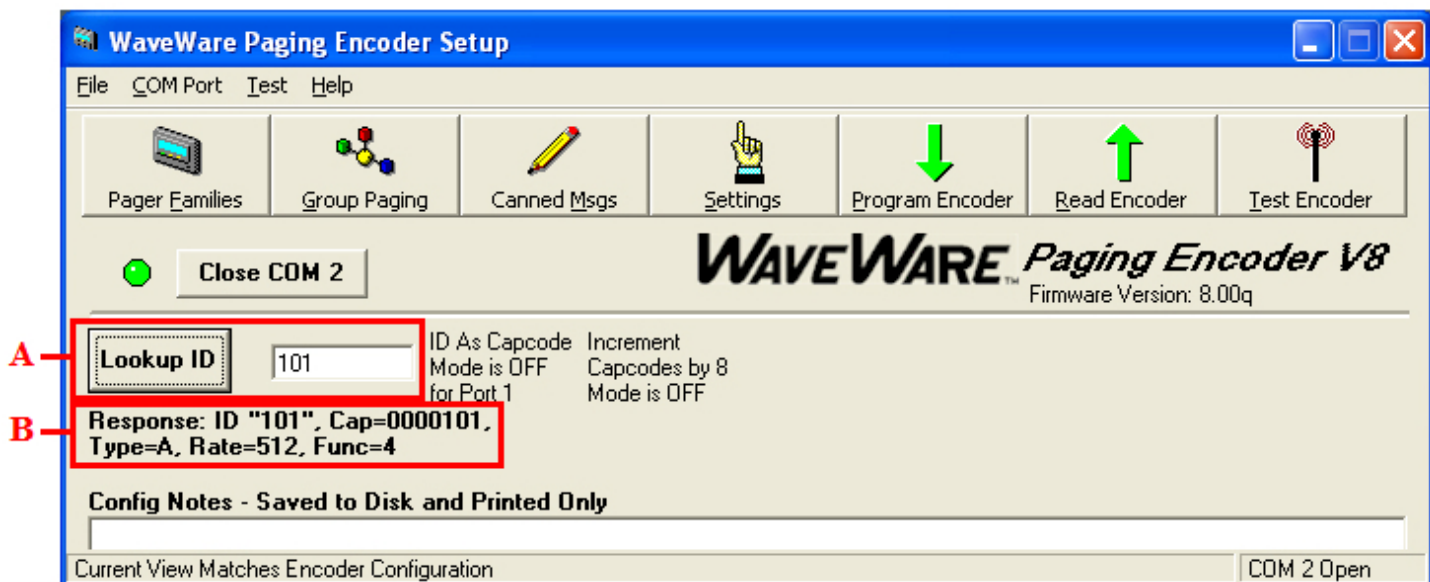


Fig. 24 (Lookup ID Function and Response)



*"We Deliver Information at the Speed of Light"*

WaveWare Sales: 1.800.373.1466 - WaveWare Fax: 972.479.1735  
WaveWare Technical Support: 1.800.373.1466 x216 - Website: [www.WirelessMessaging.com](http://www.WirelessMessaging.com)