



WaveWare Technologies, Inc.

"We Deliver Information at the Speed of Light"



RSS to LED Sign Software

RSS Feed to LED Sign Manual

WaveWare Website: www.WirelessMessaging.com

Table of Contents

Title	Page
Software and Manual Overview	2
Additional Information and PC Requirements	2
Registration / Activation <i>Important</i> Information	3
How to Install and Register / Activate the Software	4
Install / Download From the WaveWare Website	4
Registering / Activating The RSS to LED Sign Software	5
Configuring RSS to LED Sign Software Getting Started	10
Step 1 - Configuring LED Signs 5 Steps	11
Assign Sign Choose and Assign the Type of Sign	11
Connection Using an IP Address or Serial Com Port	12
View Status Check / View the Status of a Sign	13
Step 2 - Configure RSS Feeds	14
Add a RSS Feed Adding New RSS Feeds	15
Edit an RSS Feed Editing Existing RSS Feeds	16
Test an RSS Feed Test the RSS Feed	17
Step 3 - Assign RSS Feeds to Signs	18
Add Feed Add a RSS Feed to One or More Signs	18
Remove Feed Remove a RSS Feed from One or More Signs	18
Step 4 - General Settings	19
Refresh Interval Time Between Refresh Intervals in Minutes - Global	19
Step 5 - Edit RSS Feed Filters	20
Add or Edit Text Filters Enter the Text Item to be used as the Filter	20
Support – Contact Information	21



WaveWare Technologies, Inc.

"We Deliver Information at the Speed of Light"



RSS to LED Sign Software

Software Overview

WaveWare RSS to LED Software is Designed to Deliver RSS Feed Headlines to Adaptive Microsystems and Electro-Matic LED Message Boards, using a Variety of Control Features.

Control Features Include:

- Automatically Deliver RSS Feed Headlines to One or More LED Signs
 - Compatible with Adaptive and Electro-Matic LED Signs
 - Compatible with Both Serial Port and Ethernet Port Controlled LED Signs
 - Assign Multiple RSS Feed Sources to each LED Sign
 - Display up to 15 items per Feed
 - Display RSS Feed Title, Description or Both Title and Description
 - Control the Display Color Independently for the Title and Description Fields
 - Adjust the RSS Feed Refresh Interval, in Minutes
 - Filter Out RSS Feed items that Start with or Contain Certain Keywords
 - View Function is Available to see what is being Displayed on each LED Sign
-

Manual Overview

This Manual is to Explain How to Install, Register and Configure the Software.

**It is NOT recommended to install on a SERVER Model Computer.
WaveWare Does Not Support Real Servers or Server Operating Systems or Computer Terminals.
WaveWare Does Not Support Windows 8, Virtual Machines or Tablets, at this time.**

WaveWare ONLY Supports Desktop Windows OS PC's

Desktop PC Requirements:

The Minimum Hardware Requirements for use with WaveWare Software are:

"Desktop" PC Model with...

Windows XP Pro SP2 and SP3 and Windows 7 Pro SP1

1+ GHz Processor

10+ GB Hard Drive

1+ GB Memory

2+ RS-232 Serial Com Ports

1 Ethernet Port

1 CD-ROM

Registration and Activation Information:

WaveWare Support “Strongly Recommends” Requesting a Fully Functional “Trial” Activation Key to Start.

This is in case the customer (the end user) finds that the PC they chose is “Not” the one they will use. This could be for many different reasons: Not happy with the Performance, or decide to use a different PC and/or maybe in a different location within the building or during testing of the Software the PC just wouldn't work properly as required or it died, etc.

Requesting a Trial Key will “Save” the Customer a Permanent Key, in case it is needed sometime in the Future, as **ONLY 2 Activation Keys** are allowed per Desktop Server, per Purchase.

Please Note:

It is Suggested that Both the Dealer and the Customer Save a Copy of the Software and the Registration Key.

IMPORTANT

WaveWare Software “Requires” Administrator Privileges to work properly.

We Do NOT Support Multiple User Log-ins.

Important - Required Information:

The Dealer's Purchase Order Must Include the Customer (End User) Company Name as “Required” Information when Ordering WaveWare software.

This same Information along with the “Version Number” of the Software being installed is also “Required” when sending an Email with the “Request” a Key or the Activation Key will be “Delayed”.

Any Questions...

Users please call your Software Dealer who sold you the RSS to LED Sign Software, for Support.

Dealers please call Technical Support at: 1.800.373.1466 or support@wirelessmessaging.com



WaveWare Technologies, Inc.

"We Deliver Information at the Speed of Light"



RSS to LED Sign Software

Installation and Registration / Activation

Download RSS to LED Sign Software from WaveWare Website

Download the RSS to LED Sign Software from the WaveWare Website and save to a Folder anywhere on the Desktop PC. Website: <http://www.wirelessmessaging.com/wavewaresw.html>

Be sure to Download and Save the Software to a Folder and keep for any Future re-installs.

It is highly "Recommended" that you "Keep a Copy" of the Software in a Safe place.

NOTE: Without the Originally Purchased Software "Version", you will need to "Re-Purchase" the Software.

**RSS to
LED Sign**



Windows 32 Bit
Version 1.0.19

WaveWare RSS to LED
Deliver RSS Feeds to LED Signs

www.WirelessMessaging.com

Copyright 2012, All Rights Reserved
WaveWare Technologies, Inc.
Garland, Texas, USA

Registering/Activating RSS to LED Software

After Installing the RSS to LED Software, Start the Software for the First time.
You should see the “Register WaveWare RSS to LED” Icon in the Center of the Screen.

Click, on the “Register” Icon. See Fig. 1

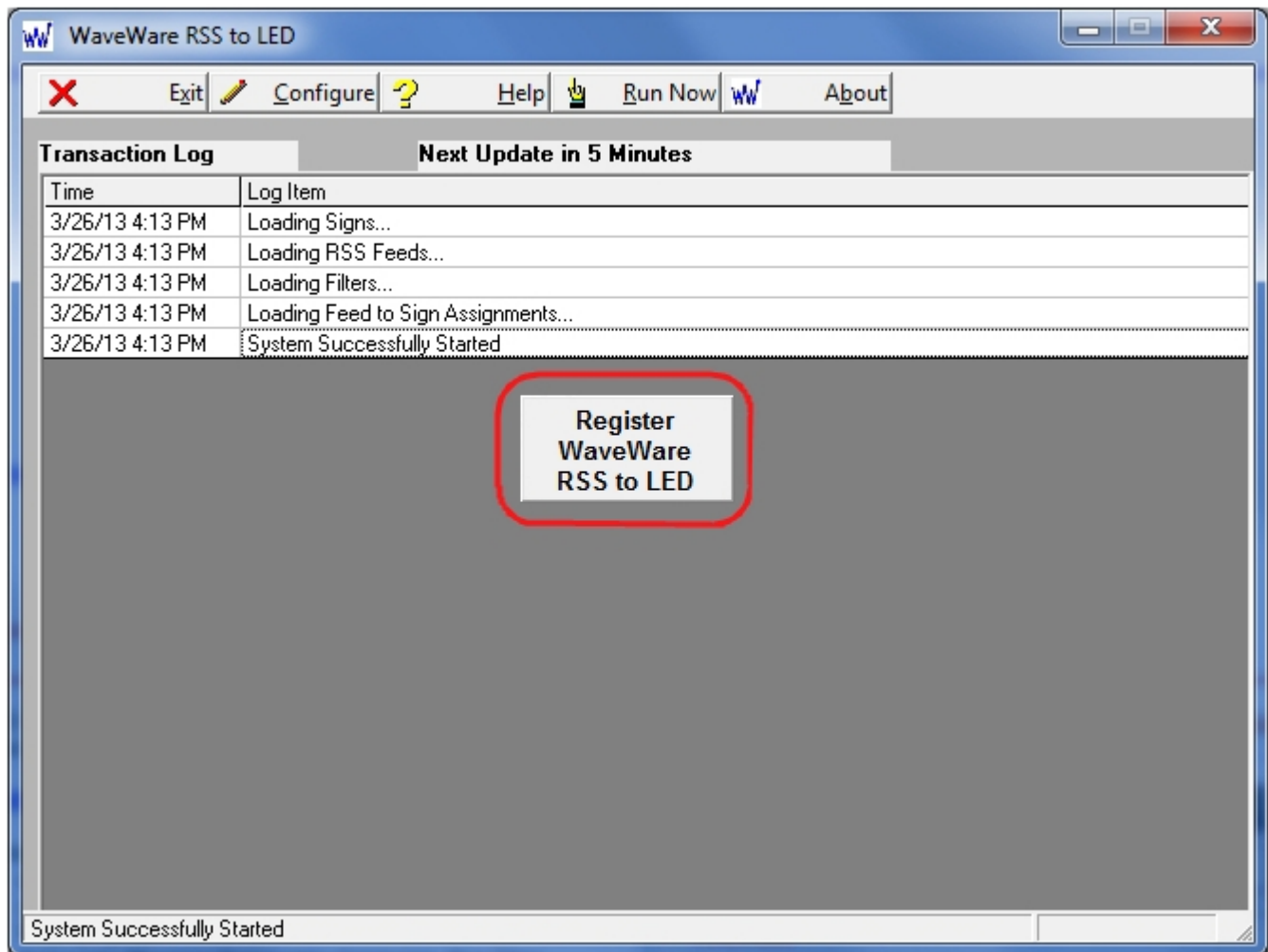


Fig. 1

If the above Screen with the Register Icon is seen, after Clicking the Icon, Jump to Page 7.

If you Do Not see the Register Icon, Please Continue to the next Page to Register the Software.

Registration – Continued

On the Main “RSS to LED Software” Screen, Click on the “About” Button, as Shown below. See Fig. 2

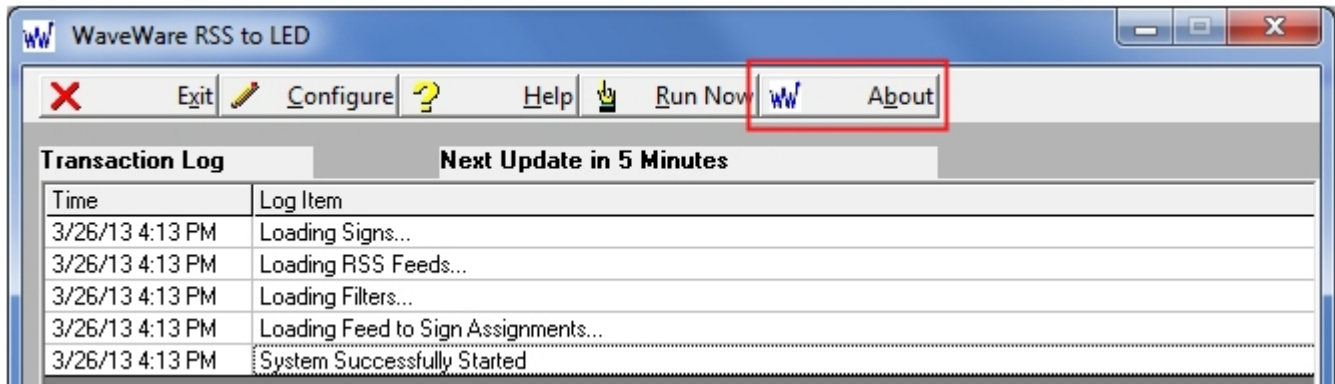


Fig. 2 Click on “About”

Next, Click on the “Registration” Button. See Fig. 3



Fig. 3 Click on “Registration”

Next: Instructions for [Registering](#) our RSS to LED Software

Generating the "Request Key" for RSS to LED Software

After Clicking the Register Icon or Registration Button, Click the "Generate Request Key" Button. See Fig. 4

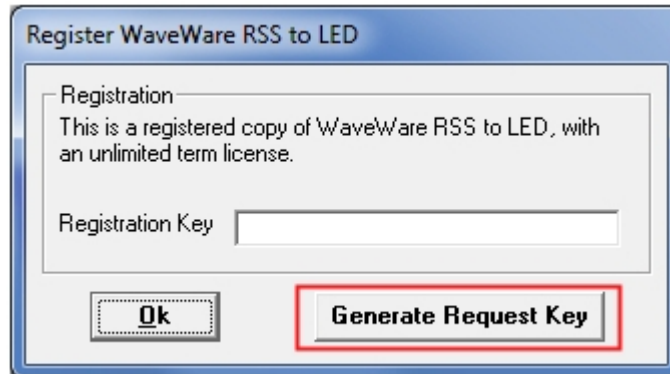


Fig. 4

Follow the Instructions on the Request Key Screen to send the "Request Key" to WaveWare. See Fig. 5

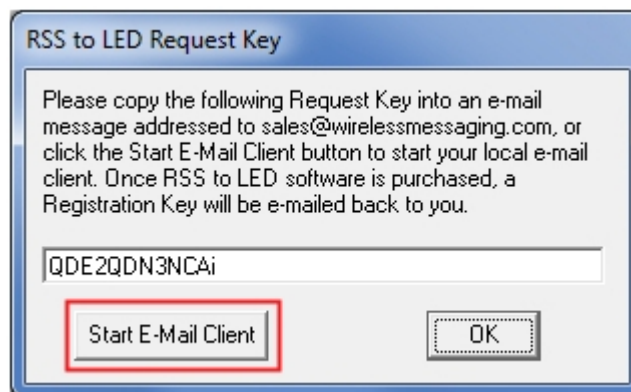


Fig. 5

If you have Internet and Email capability on the PC, Click on the "Start E-Mail Client" Button. See Fig. 5

IMPORTANT NOTE: The "Activation Key" will ONLY work on the Computer that Generated the Request Key.

Please proceed to the Next Page for instructions to send the Generated Request Key to WaveWare.

Email the "Request Key" for the Software to WaveWare

After you Click on the "Start Email Client" Button (Previous Page -Fig. 5)...

This should start and open an E-mail Client Window with the "Key" in the Body of the E-Mail, and our "Sales" Email Address in the "To: Window" and the "Software Name" in the Subject Line. As shown below in Fig. 6.

If you Do Not have Internet and Email on the Desktop PC, then Copy and Paste the Request Key into Notepad or a Word Document and then Copy that file to a Flash Drive and take to a PC that does have Email capability. Registration is by Email Only.

Please, Be sure to "ADD ALL" of the 4 Required Information Fields to the Email, as shown below. See Fig. 6

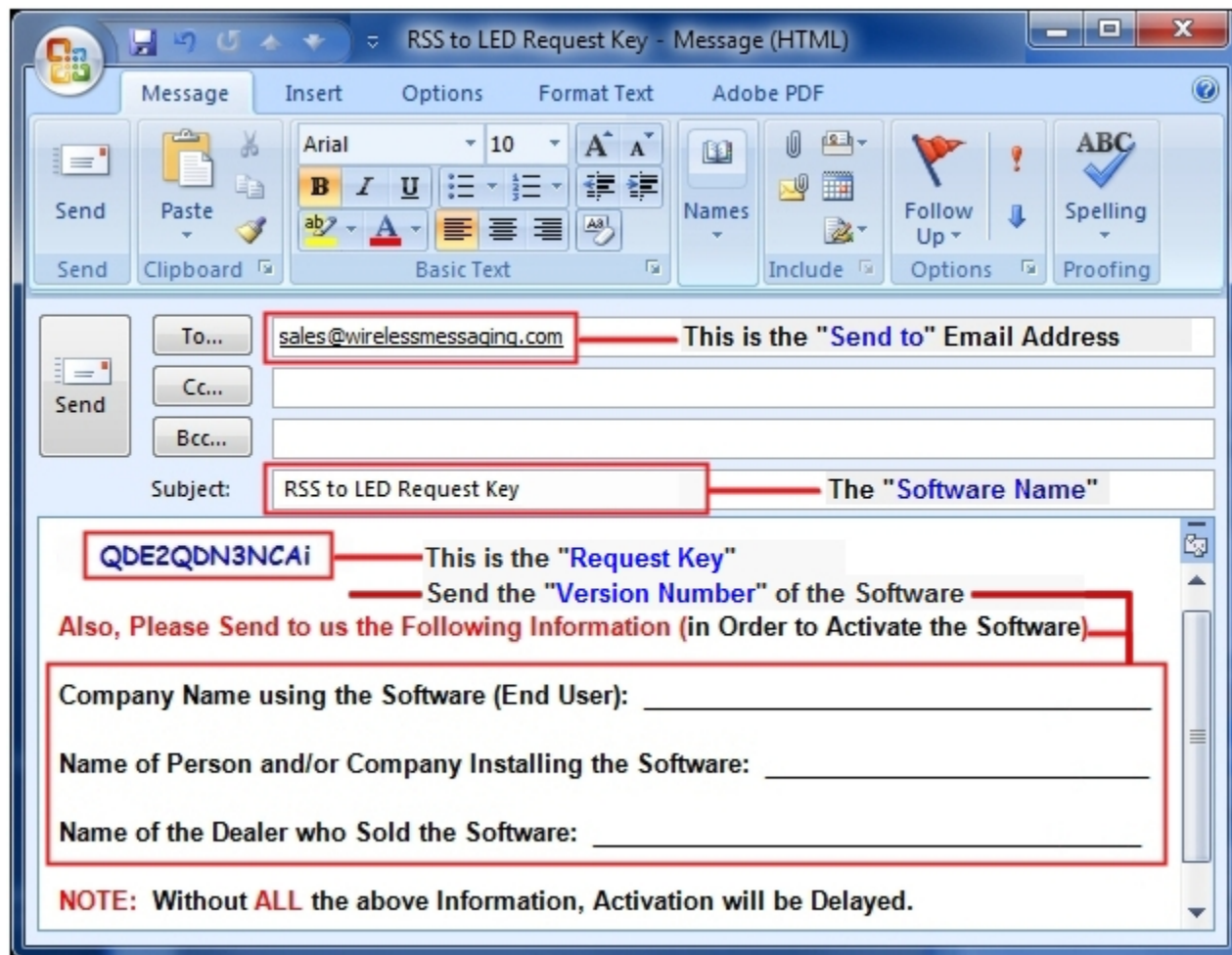


Fig. 6

NOTE 1: Include in the **Body of the E-Mail:** Your Company Name, Contact Name and the Name of the Company from whom the "Software was Purchased From" and send the E-Mail to us: Sales@WirelessMessaging.com

NOTE 2: Include the "Version" Number for the Software you are Installing, in the Email.

NOTE 3: Failure to Send **All the Required Information** will **Delay Sending** the **Activation Key**. See Fig. 6

Without All the Required Information, No Key will be sent.

Registering/Activating our Software

WaveWare will send a Reply Email with the “Registration/Activation Key” for either a Trail Key or Permanent Key.

If you have not received a reply within 1 Hour, please call us at: 1.800.373.1466, and ask for Tech Support.

Copy and Paste the “Activation Key” into the “Registration Key” Field and Click “OK”. See Fig. 7



Fig. 7

You should then see: “Registration Was Successful”. Click “OK”, See Fig. 8

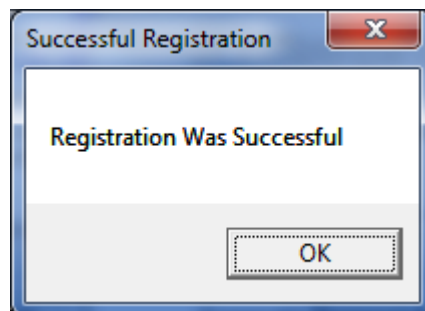


Fig. 8

This Concludes the Registration Process.

If you have any Problems with the Installation or Registration or just have Questions, please Contact the Dealer from whom you have purchased the Software.

Please Note:

WaveWare Supports our Dealers and our Dealers Support their Customers.

Thank you.

Next: How to Configure RSS to LED Software



WaveWare Technologies, Inc.

"We Deliver Information at the Speed of Light"



RSS to LED Sign Software

Configuring the RSS to LED Sign Software

This covers the Basic Setup and Configuration of RSS to LED Sign Software.

Click on the "Configure" Button to start the Configuration Process, as Shown below. See Fig. 9

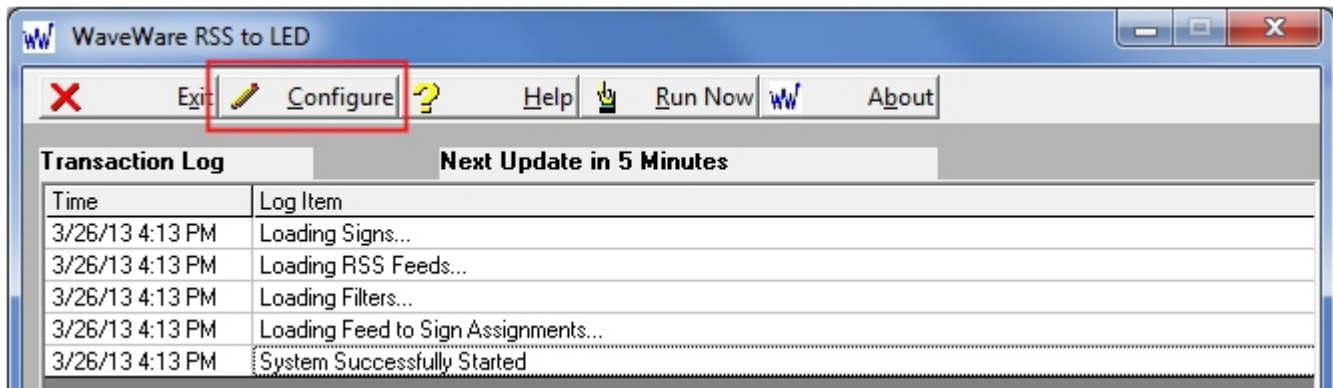


Fig. 9 Click the "Configure" Button

You will be asked if you are sure, as the Data Processing is "Disabled" During the Configuration Process.

Click "Yes" to Continue. See Fig. 10

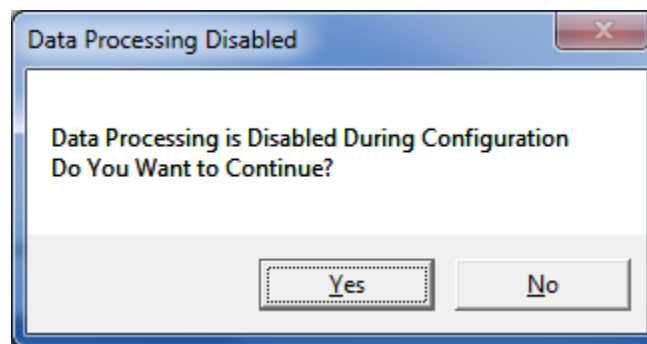


Fig. 10 Click "Yes"

Configure – LED Signs

There are 5 Steps Required to Configure the RSS to LED Signs Software. See Fig. 11

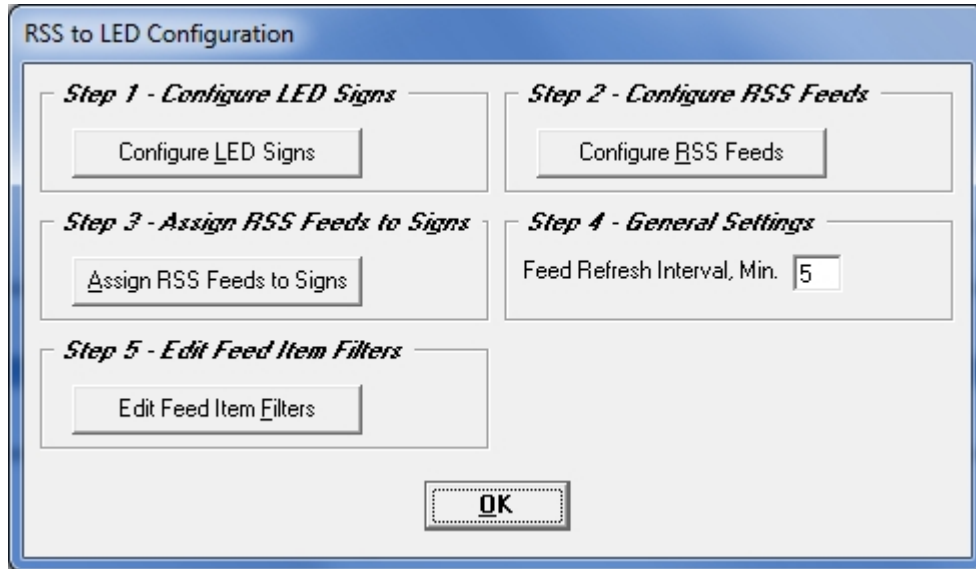


Fig. 11 RSS to LED "Configuration" Screen

- Step 1: Configure LED Signs
- Step 2: Configure RSS Feeds
- Step 3: Assign RSS Feeds to Signs
- Step 4: General Settings
- Step 5: Edit Feed Item Filters

Step 1- Configure the LED Signs

For Adding a LED "Sign Type", Edit the "IP Address" or "Com Port and to View the Sign "Status" Information.

Click the "Configure LED Signs" Button. See Fig. 12

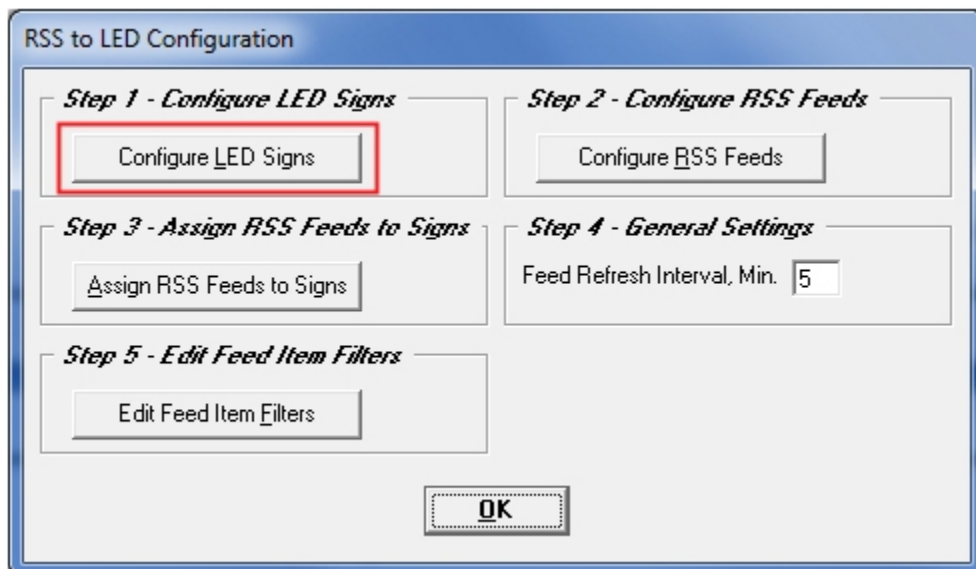


Fig. 12 Click the "Configure LED Signs" Button

Configure – LED Signs - Continued

To Edit an Existing LED Sign- See Fig. 13 and 13A

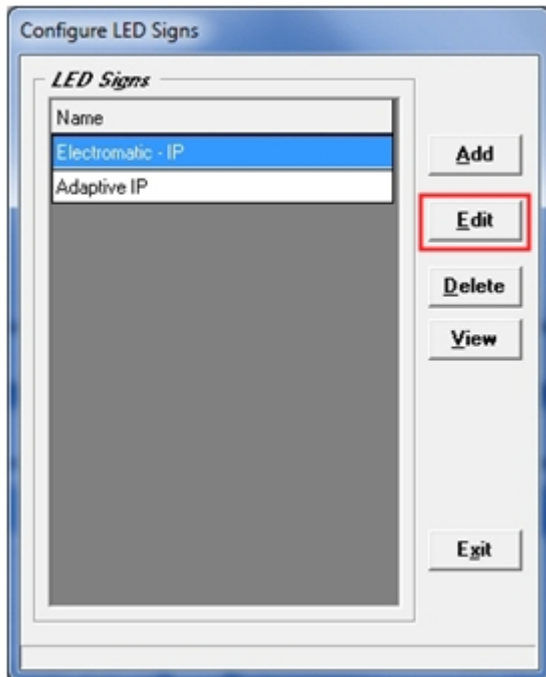


Fig. 13

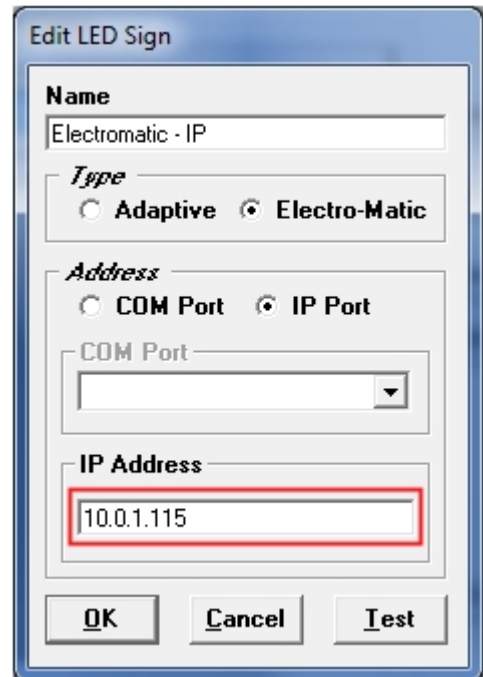


Fig. 13A

Highlight the "Sign" and Click "Edit" to Change IP Address

Enter New "IP Address" and Click "OK"

To Add a New LED Sign- See Fig. 14 and 14A

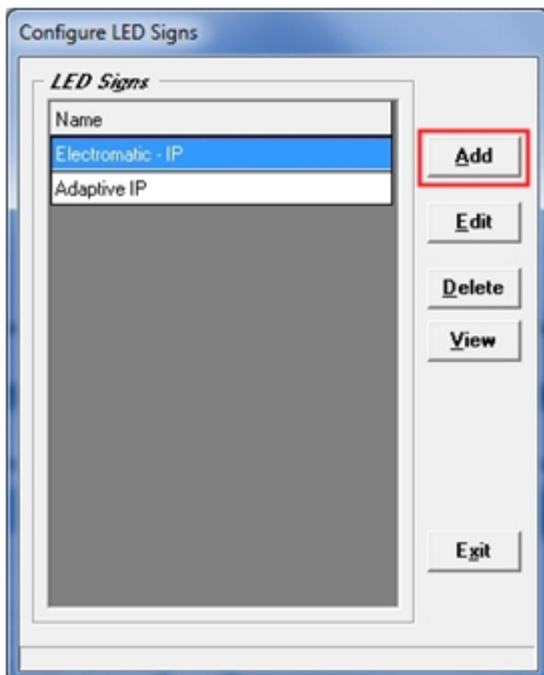


Fig. 14

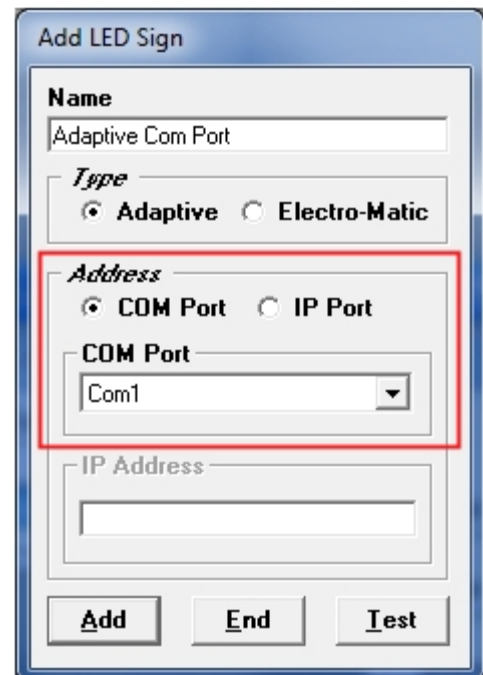


Fig. 14A

To Add a Sign that will use a "Com Port", Click "Add"

Choose Sign "Type" and the "Com Port" (Number) and then Click the "Add" Button

12 Click the "Test" Button to Check Configuration

Configure – LED Signs – Continued

To see the LED Sign Status, “Highlight” the Sign you want to look at and Click the “View” Button Fig. 15 and 15A

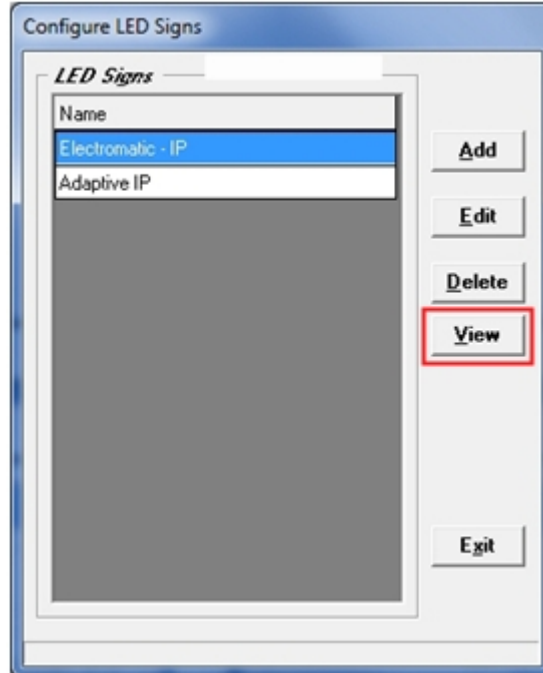


Fig. 15 Click the “View” Button

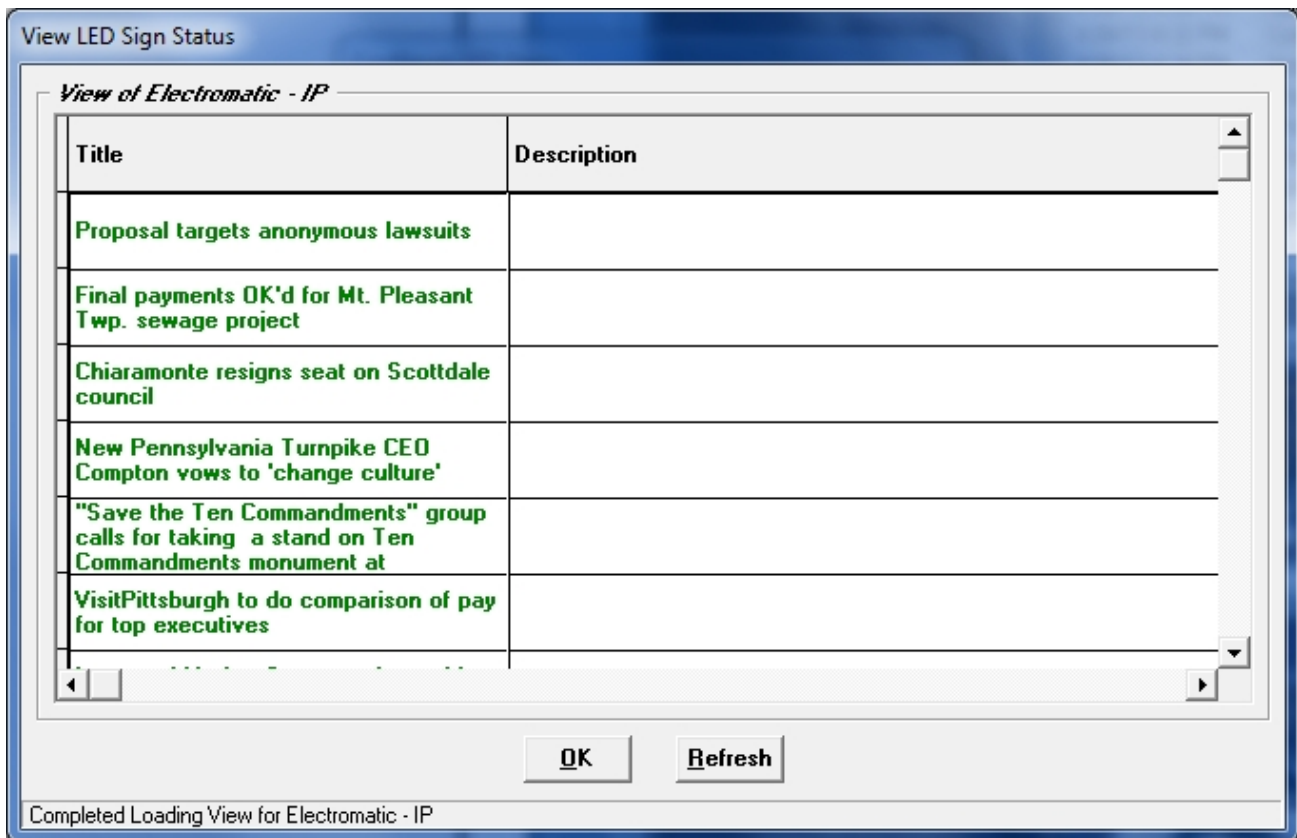


Fig. 15A View of the LED Sign “Status” Screen, Click the “Refresh” Button for Latest Information

Configure – RSS Feeds

Step 2- Configure the RSS Feeds

For Editing existing RSS Feeds and Adding New “RSS Feeds”.

Click the “Configure RSS Feeds” Button. See Fig. 16

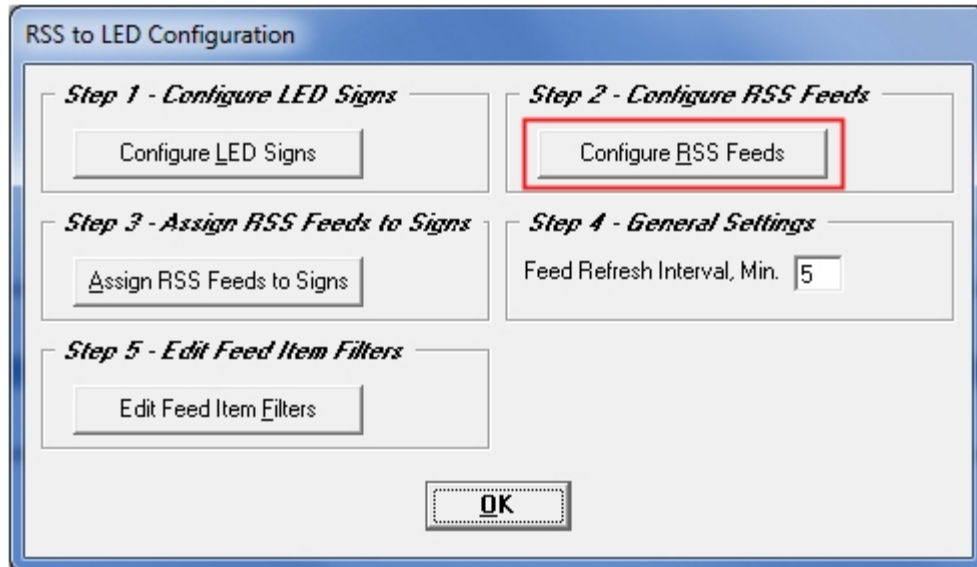


Fig. 16 Click the “Configure RSS Feeds” Button

To Add a New RSS Feed, Click the “Add” Button. See Fig. 16A

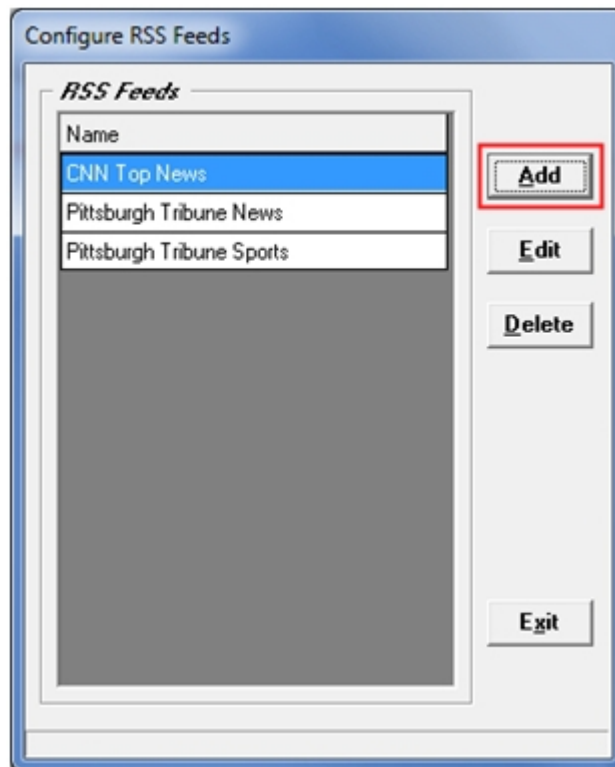
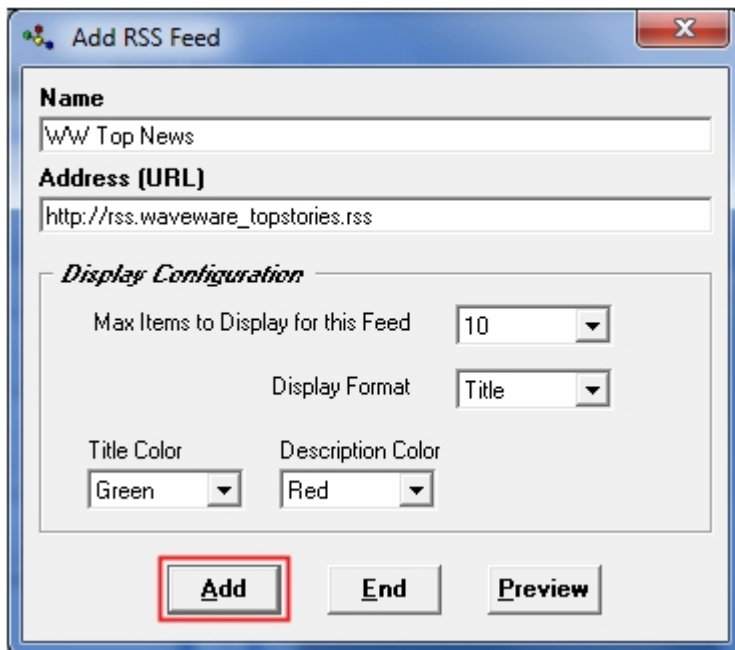


Fig. 16A Click the “Add” Button

Configure – RSS Feeds - Continued

To Add a New RSS Feed- See Fig. 17 and 17A



Add RSS Feed

Name
WW Top News

Address (URL)
http://rss.waveware_topstories.rss

Display Configuration

Max Items to Display for this Feed: 10

Display Format: Title

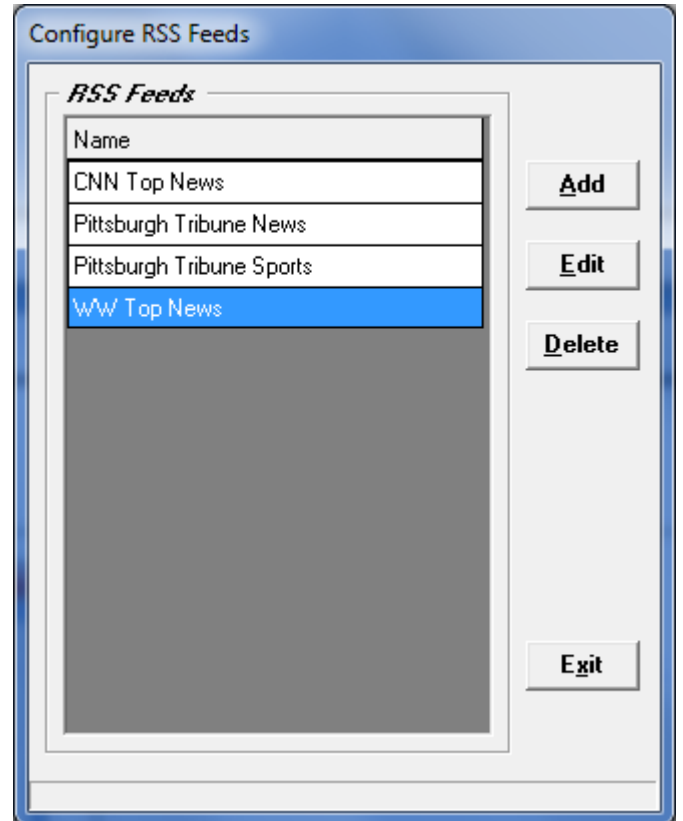
Title Color: Green

Description Color: Red

Add **End** **Preview**

Fig. 17 Enter All Information and Click the “Add” Button

- Choose the “Name” and Enter the URL “Address”
- Choose the “Max Items” to Display for this Feed
- Choose the “Display Format” for this Feed
- Choose the “Title” Color for this Feed
- Choose the “Description” Color for this Feed
- When Finished, Click the “Add” Button



Configure RSS Feeds

RSS Feeds

Name
CNN Top News
Pittsburgh Tribune News
Pittsburgh Tribune Sports
WW Top News

Add **Edit** **Delete**

Exit

Fig. 17A

The New “RSS Feed” will be Listed

Configure – RSS Feeds – Continued

To Edit an Existing RSS Feed- See Fig. 18 and 18A

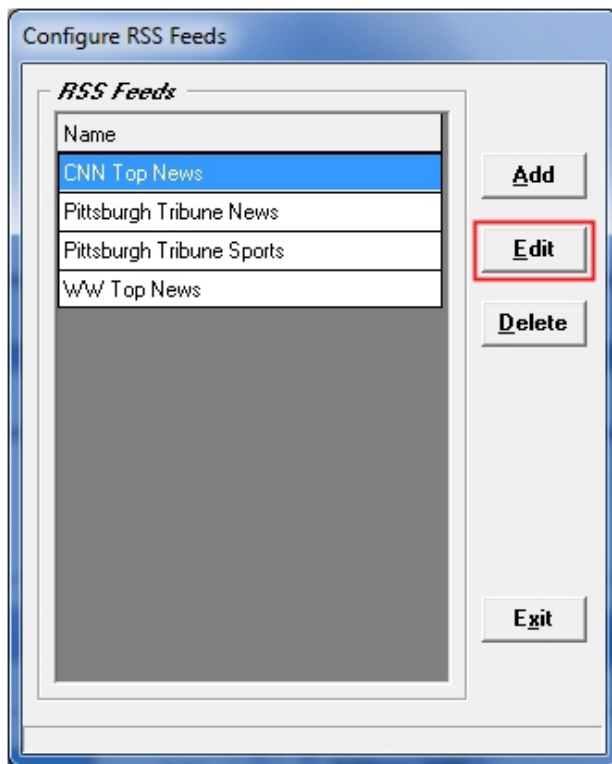


Fig. 18 Click the "Edit" Button

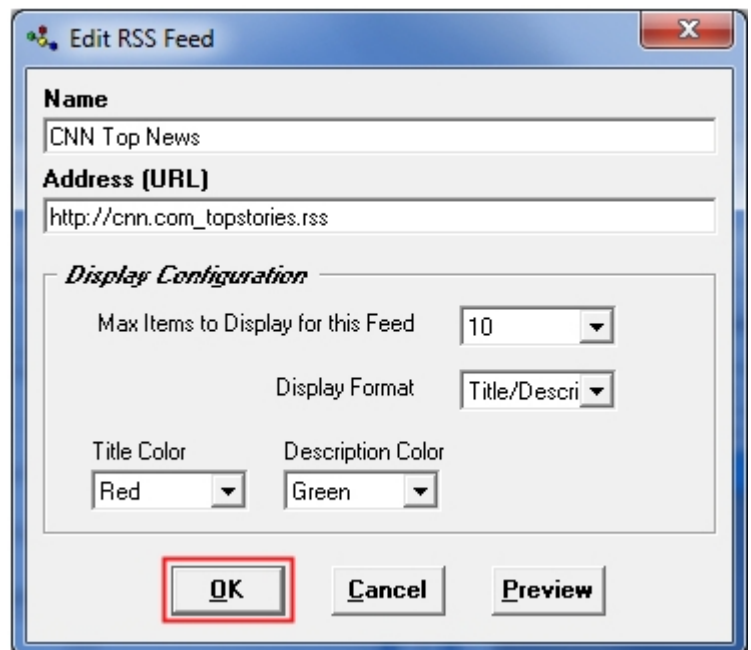


Fig. 18A Enter All Information and Click the "OK" Button

- Edit the "Name" and Enter the URL "Address"
- Edit the "Max Items" to Display for this Feed
- Edit the "Display Format" for this Feed
- Edit the "Title" Color for this Feed
- Edit the "Description" Color for this Feed
- When Finished, Click the "OK" Button

Configure – RSS Feeds – Test Feed

To Preview what the RSS Feed is Receiving, Click the “Preview” Button Fig. 19 and 19A

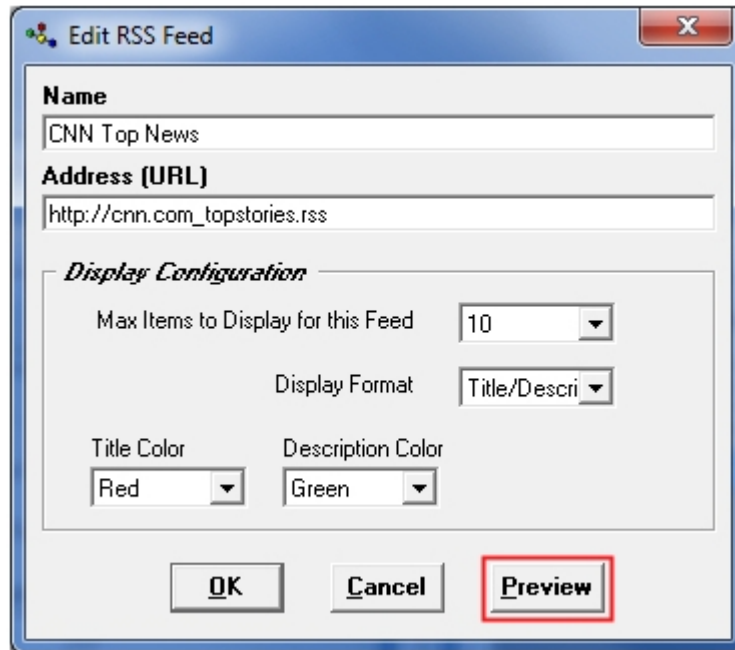


Fig. 19 Click the “Preview” Button

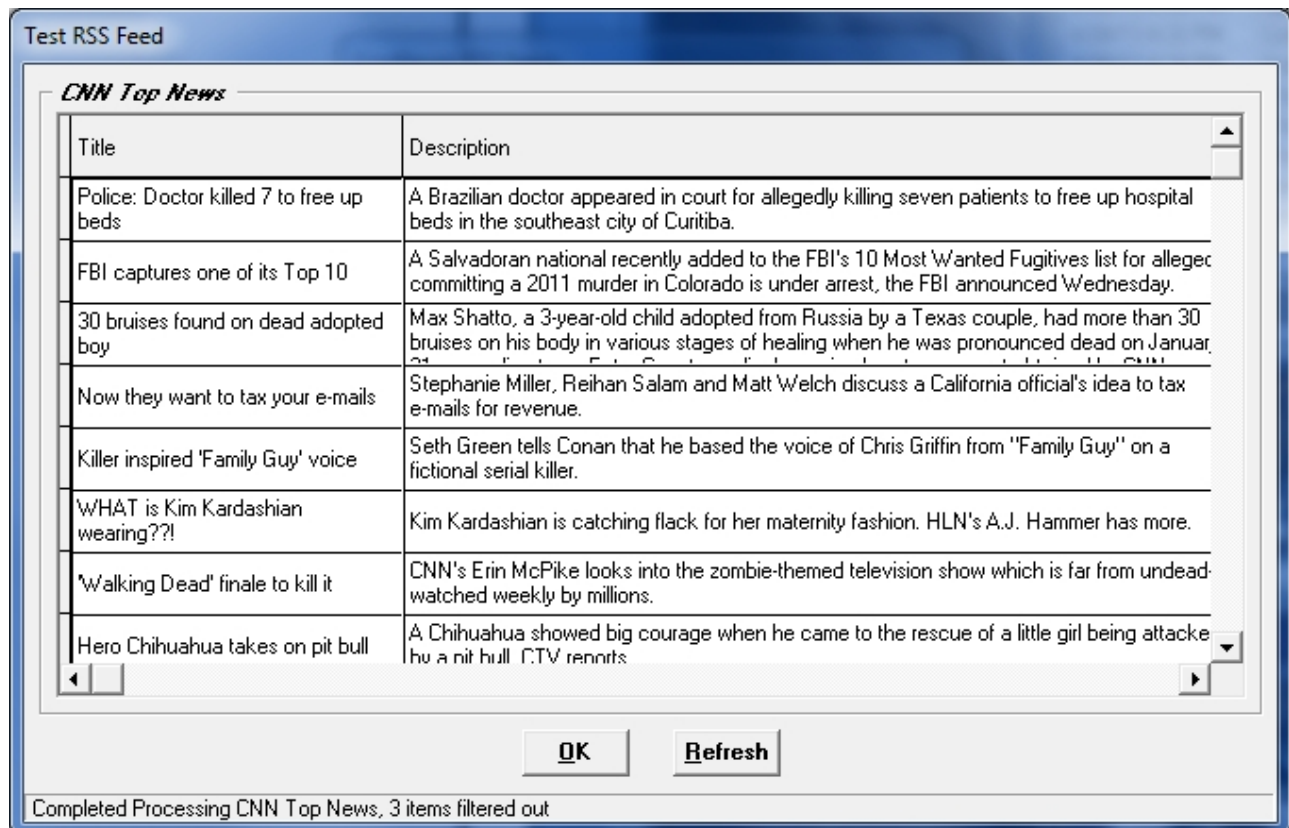


Fig. 19A Click the “Refresh” Button to View the Latest Information for this Feed

Configure – Assign RSS Feeds to Signs

Step 3- Assign the RSS Feeds to the Signs

For Assigning the RSS Feed(s) to a Sign or Multiple Signs

Click the “Assign RSS Feeds to Signs” Button See Fig. 20



Fig. 20 Click the “Assign RSS Feeds to Signs” Button

Highlight a Sign in the “Signs” Column, then Click Feed from the “Feeds” Column. The Feeds Assigned to a Sign will Show in the “Feeds on Sign” Column. See Fig. 20A



Fig. 20A Assign “Feeds” to “Signs”

You “Remove” a Feed from a Sign using the same Method.

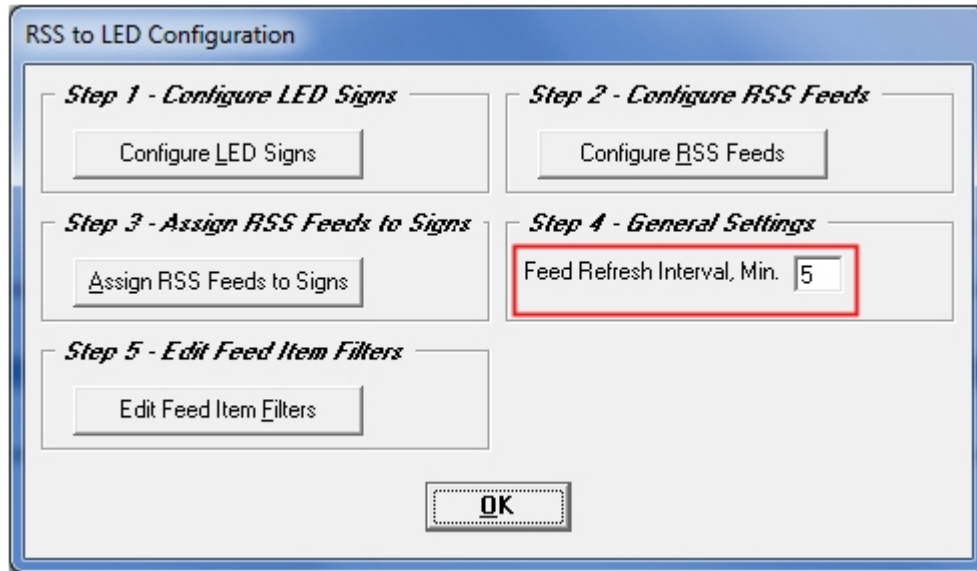
By Highlighting a “Sign” and Clicking a “Feed”, the Feed will then be “Un-Assigned” and “Removed” from the “Feeds on Sign” Column.

Configure – General Settings – Feed Refresh Interval

Step 4- Feed Refresh Interval – In Minutes

For Assigning the Refresh Rate (Interval) of the RSS Feeds on the Sign(s)

“Enter” the Feed Refresh Interval – “In Minutes” in the Field Shown See Fig. 21



The image shows a software dialog box titled "RSS to LED Configuration". It is divided into five steps, each with a button: "Step 1 - Configure LED Signs" (Configure LED Signs), "Step 2 - Configure RSS Feeds" (Configure RSS Feeds), "Step 3 - Assign RSS Feeds to Signs" (Assign RSS Feeds to Signs), "Step 4 - General Settings" (Feed Refresh Interval, Min. 5), and "Step 5 - Edit Feed Item Filters" (Edit Feed Item Filters). The "Step 4" section is highlighted with a red border, and the input field for "Feed Refresh Interval, Min." contains the number "5". An "OK" button is located at the bottom center of the dialog.

Fig. 21 “Enter” the Feed Refresh Interval – “In Minutes”

NOTE:

This is a “Global Setting” for All Signs.

Configure – Edit Feed Item Filters

Step 5- Edit Feeds Item Filters

For Editing the RSS Feed using “Item Filters”.

Click the “Edit Feed Items Filters” Button See Fig. 22

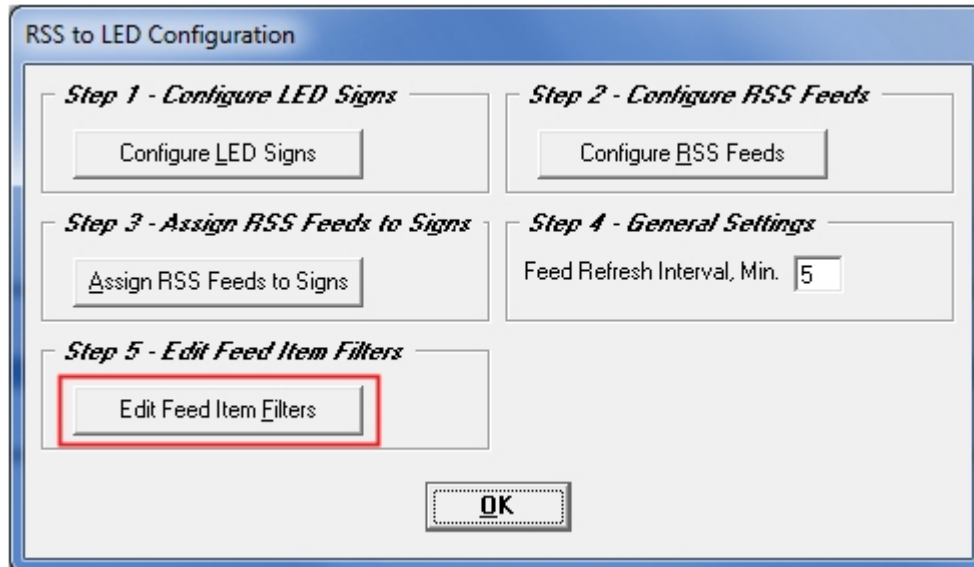


Fig. 22 Click the “Edit Feed Items Filters” Button

To Add a “Filter”, Click the “Add” Button See Fig. 23 and 23A

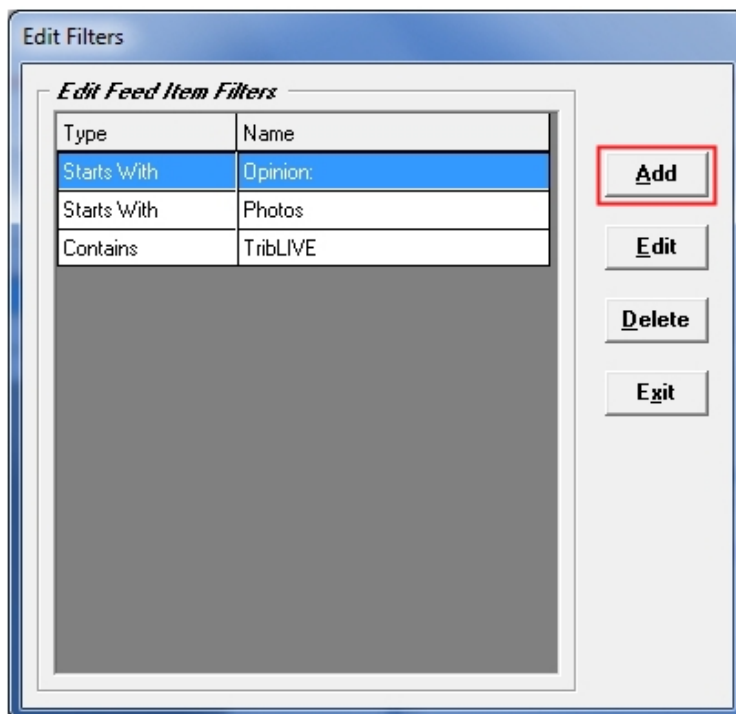


Fig. 23 Click “Add” Button

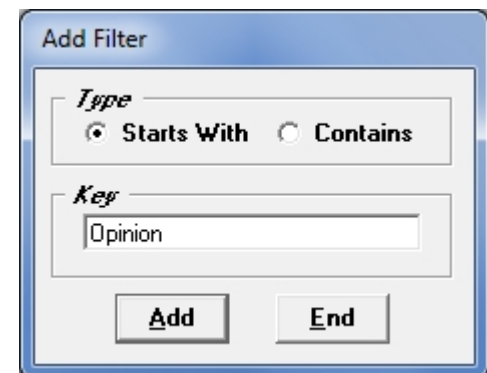


Fig. 23A

- Choose “Starts With” or “Contains”
- Enter the “Key” Text to be used
- Click “Add” Button to use this Filter
- Click “End” to Exit this Window

To make Changes to an Existing Filter, Click the “Edit” Button



WaveWare Technologies, Inc.

"We Deliver Information at the Speed of Light"



RSS to LED Sign Software

This Ends the RSS to LED Sign Manual.

Please Contact your Software Dealer for Support

WaveWare Technical Support: Support@WirelessMessaging.com or 1.800.373.1466 x216

Software Developed by WaveWare Technologies, Inc.

Copyright © 2013