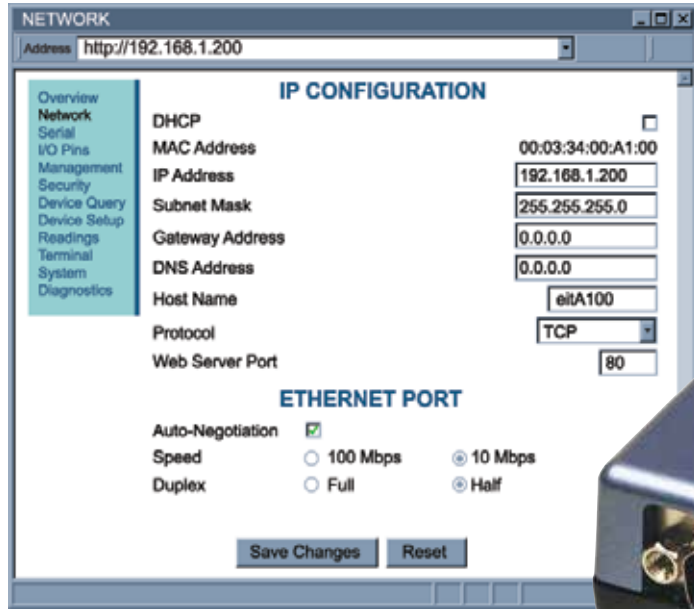


iServer MicroServer™ for Serial-to-Ethernet Applications



Connect Any Serial Device to Ethernet LAN and the Internet



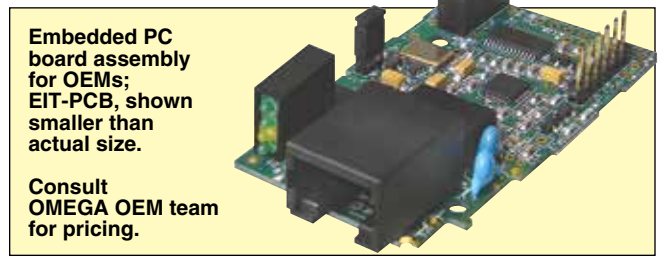
Wall Mount or Benchtop for Commercial Applications

EIT Series
1 YEAR WARRANTY FCC-B

Quickly Configured Through a Web Browser

EIT-W shown smaller than actual size.

- Put Any Serial Device On the Network in Minutes
- Bridge RS232/RS485 to TCP/IP
- Auto-Negotiating 10/100 Ethernet Half/Full Duplex
- Built-In Web Server
- TCP, UDP, SNMP, SMTP, TFTP, ICMP, Telnet, DHCP, DNS, HTTP, and ARP
- MODBUS® RTU to MODBUS TCP/IP Bridging
- Email Notifications and SNMP Traps
- 1 to 6 Programmable I/Os
- Firmware Upgrade Over Ethernet
- Custom Firmware/Private Labeling for OEMs
- TCP Socket with Command Line Interface
- Serial Speed up to 460 Kb/s
- Authentication and Access Restrictions
- Small Enough to Fit Almost Anywhere
- Free COM Port Redirector
- Free Configuration Software
- RoHS 2 Compliant

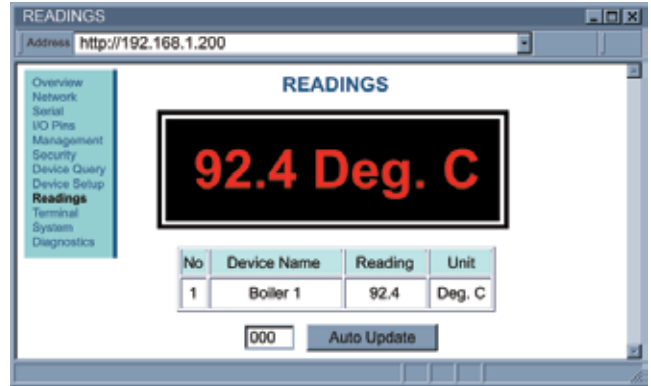


DIN Rail Mount for Industrial Applications

EIT-D shown smaller than actual size.

The 3rd Generation OMEGA® iServer connects any serial device (RS232, RS485) to an Ethernet network or the internet in minutes, including serial Modbus to MODBUS TCP/IP over Ethernet. The iServer3G can send notifications by email, and has SNMP for remote management. OMEGA offers custom firmware and private-labeling for OEMs.

R



Specifications

Serial Interface

Interface: RS232 or RS485 (2- and 4-wire)

Connector: DB9 male DTE for RS232; 8 position terminal block plug for RS485

Serial Data Rates: 300 to 460,800 Kbps

Characters: 5, 6, 7, or 8 data bits

Parity: Odd, even, or none

Stop Bits: 1 or 2

Flow Control: Hardware (RTS/CTS) and software (Xon/Xoff)

Digital I/Os: 1 to 6 programmable input/output lines, depending on model

Network Interface

Interface: Fixed or auto-negotiating 10/100BASE-T half/full duplex Ethernet with auto MDI/MDIX

Connector: RJ45

Protocols: TCP, UDP, SNMP, SMTP, TFTP, ICMP, DHCP, DNS, HTTP, ARP, Modbus TCP/IP, and Telnet

Compliant to Standard: IEEE 802.3

Indicators (LEDs): 100BASE-T, Network Link/Activity, and Serial Transmit/Receive

32-Bit Microprocessor:

CPU: ARM7, 72 MHz

Memory: 512 Kbyte Flash, 32 Kbyte SRAM

Embedded Web Server: Serves dynamic Web pages and Java applets

Management: Web server, Telnet login, Serial login, iConnect

General

Power (EIT-PCB):

Input: 5 Vdc @ 200 mA maximum

Consumption: 1 W maximum

Power (EIT-W):

Input: 5 Vdc @ 200 mA maximum

Consumption: 1 W maximum

Safety Qualified AC Power Adaptor (Included):

Nominal Output: 5 Vdc@600 mA

Input: 100 to 240 Vac, 50/60 Hz

Operating Temp: 0 to 40°C (32 to 104°F)

Power (EIT-D):

Input: 10 to 32 Vdc

Consumption: 2 W maximum

iDRN-PS-1000: (DC power supply sold separately)

Environmental

Operating Temp: -40 to 85°C (-40 to 185°F)

Storage Temp: -40 to 100°C (-40 to 212°F)

Software: COM Port Redirector (iPort); Configuration software (iConnect)

